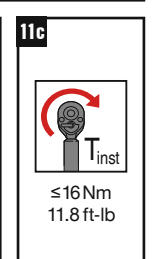
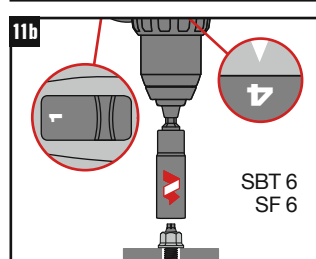
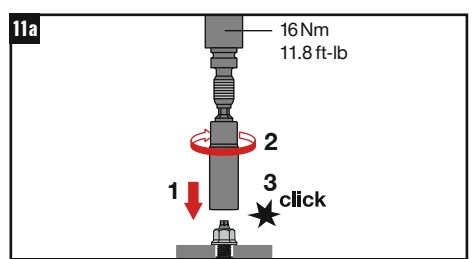
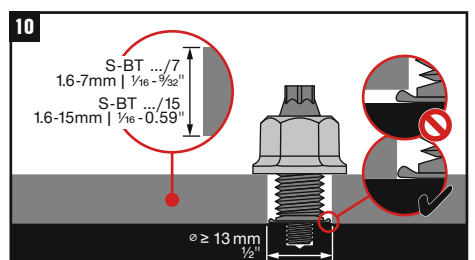
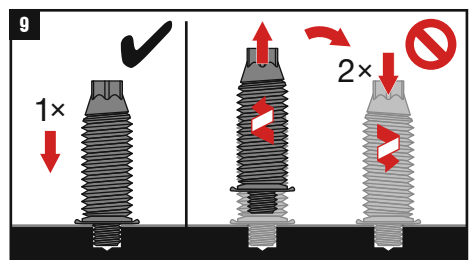
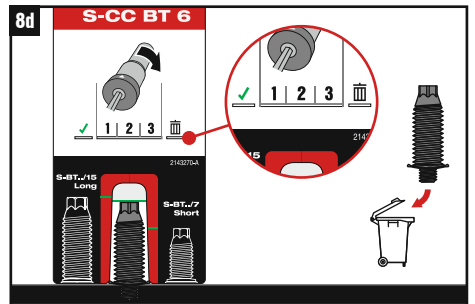
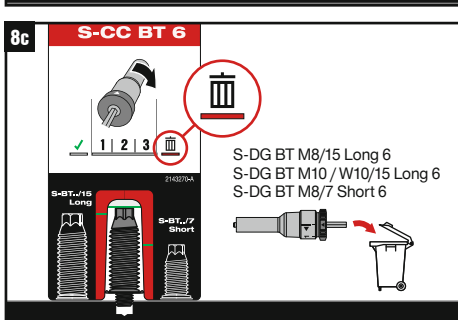
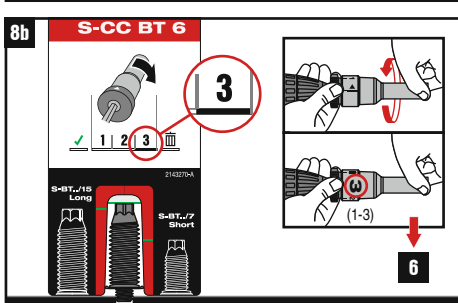
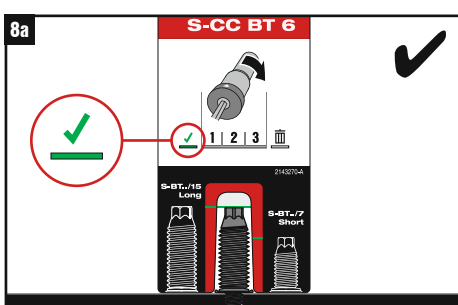
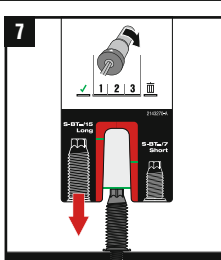
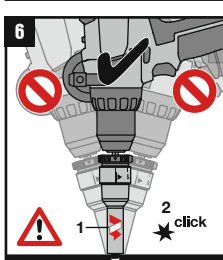
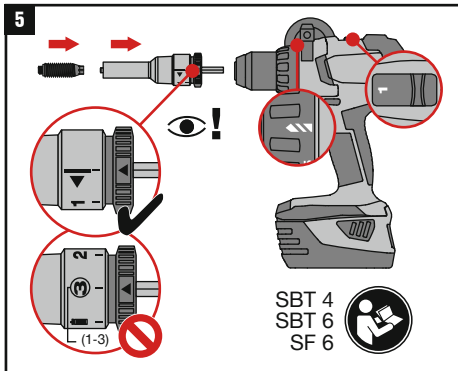
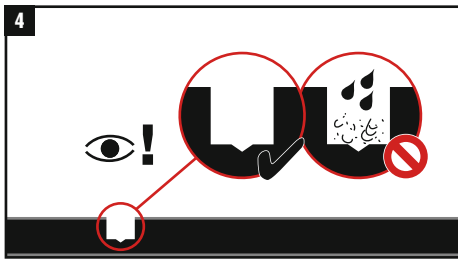
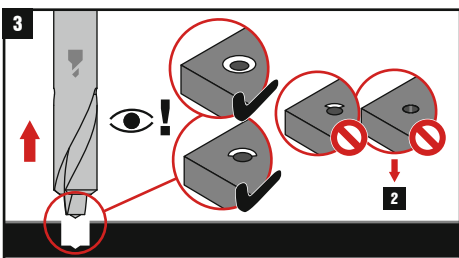
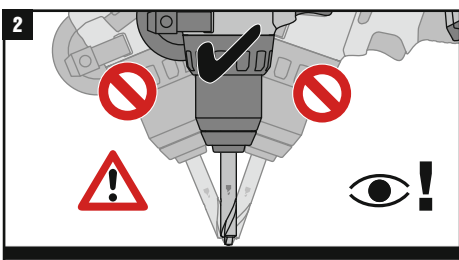
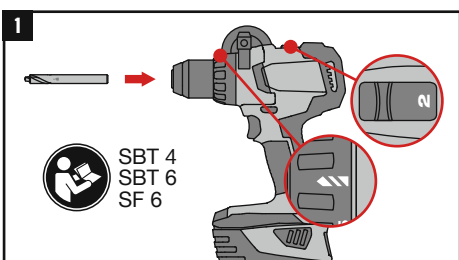


	SBT 4	SBT 6 SF 6
	TS-BT 5.3-65 S	
	S-DG BT M8/15 Long 6 S-DG BT M10/W10/15 Long 6 S-DG BT M8/7 Short 6	
	Torque Tool S-BT 1/4" 16 Nm / 11.8 lb-ft	
	S-NS 13 C 95/3 1/4" (M8) S-NS 15 C 95/3 1/4" (M10) S-NS 9/16" C 95/3 1/4" (W10)	
	S-CC BT 6	



23
Hilti Corporation, Feldkircherstrasse 100, FL-9494 Schaan, Liechtenstein
Hilti-SF-DoP-044
ETA-23/0001
EAD 333037-00-0602
0672-CPR
Threaded studs for connection of materials to structural steel and aluminium members
www.hilti.group

A4 316 Equivalent Corrosion Resistance

Eye icon with exclamation mark

S-BT-MR M8/15 SN 6 HL
S-BT-MR M10/15 SN 6 HL
S-BT-MR W10/15 SN 6 HL
S-BT-MR M8/7 SN 6 HL

Hex nut with flange M8-A4
Hex nut with flange M10-A4
Hex nut with flange W10-A4

	SBT 6
	TS-BT 5.3-65 S
	S-SH BT M8/M10/W10
	Torque Tool S-BT 1/4" 16 Nm / 11.8 lb-ft
	S-NS 13 C 95/3 1/4" (M8) S-NS 15 C 95/3 1/4" (M10) S-NS 9/16" C 95/3 1/4" (W10)
	S-IC BT

1

SBT 6

2

>200 N
>45 lb

3

4

RPM 2000
200

5

2

6

7

click

SBT 6

8

1

2

9

10

1

2

3

11

12

S-IC BT

12

1x

2x

13

S-BT .../7
1.6-7mm | 1/16 - 9/32"

S-BT .../15
1.6-15mm | 1/16 - 0.59"

$\ge 13\text{mm}$ / 1/2"

14a

16Nm
11.8 ft-lb

1

2

3 click

14b

SBT 6

14c

$\le 16\text{Nm}$
11.8 ft-lb

CE
23
Hilti Corporation, Feldkircherstrasse 100, FL-9494 Schaan, Liechtenstein
Hilti-SF-DoP-044
ETA-23/0001
EAD 333037-00-0602
0672-CPR
Threaded studs for connection of materials to structural steel and aluminium members
www.hilti.group