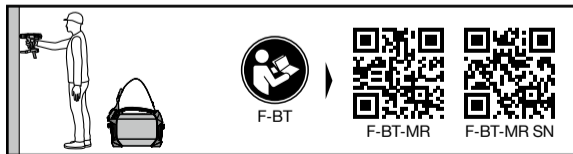
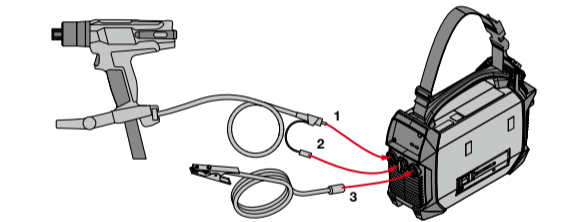
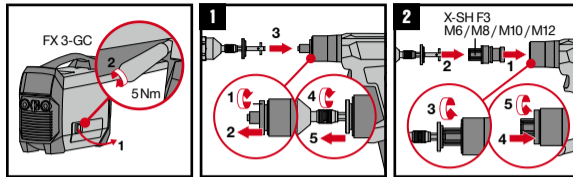




Use together	
Stud Holder X-SH F3	Stud diameter F-BT
X-SH F3 M6-1/4"	M6-1/4"
X-SH F3 M8-5/16"	M8-5/16"
X-SH F3 M10-3/8"	M10-3/8"
X-SH F3 M12-1/2"	M12-1/2"

FX 3-A		X-WST F3-BT M6 / M8 / M10 / M12	
FX 3-HT		X-SHT F3	
C 53		S-BT 1/4" - 5 Nm	
X-GC F3		FX 3-GC	
X-MC F3		FX 3-ST d14	
		FX 3-ST d20	



Lift FX 3-HT and confirm pressing OK button.
Check stud quality (IFU) & correct behavior



Lift FX 3-HT

1. FX 3-A on & ready FX 3-HT ready stud inserted		
2. FX 3-HT compressed Ready to trigger		
3. During welding process		
4A. Process finished (no irregularities)		
4B. Process finished (irregularities)		

	FX 3-HT	FX 3-A
1. FX 3-A on & ready FX 3-HT ready stud inserted		
2. FX 3-HT compressed Ready to trigger		
3. During welding process		
4A. Process finished (no irregularities)		
4B. Process finished (irregularities)		

Code	Error	Explanation	Corrective Action
F.01	Service / Repair	Internal errors on tool / battery / hand tool	Switch off / on, charge fully, repair at Hilti
F.02	Battery low or defective	Battery empty or defect	Charge tool, charge fully
F.03	Temperature out of range	Tool / hand tool out of temperature range	Bring equipment in allowed temperature range
F.04	Hand tool not connected	Hand tool not connected to tool	Connect hand tool
F.05	Gas low or defective	Gas cartridge empty or gas system defect	Insert new gas cartridge
F.06	Hand tool inner mechanics sticky	Inner mechanics runs slowly / sticky	Check movement and movable components, exchange stud holder
F.07	Electrical connection bad	Electrical resistance is high	Connect base clamp properly, check stud holder and cables
F.08	Charger defective	Charger defective	Replace charger
F.10	Stud embedment not proper	Stud did not properly plunge in	Select correct H-Code, follow exactly instructions for welding
F.11	Surfacing missing	No proper surface preparation or positioning	Use surfacing tool correctly, position stud properly
F.13	Stud not properly inserted	Stud or stud holder not inserted correctly	Insert stud properly (click in), check stud holder
F.14	Operator interrupted process	Hand tool pulled during process	Hold hand tool in position till "process finish" indication
F.16	Spot contaminated	Welding spot contaminated	Keep spot and stud clean, press on perpendicular
F.17	Process aborted	Process terminated	Follow exactly instructions for welding, keep spot and stud clean, check all components



FX 3-A



C 53



F-BT-MR



F-BT-MR SN