

HST Stud anchor

	Anchor version	Benefits
	HST Carbon steel	- suitable for non-cracked and cracked concrete - quick and simple setting operation
	HST-R M8-M12 Stainless steel	- safety wedge for certain follow up expansion - seismic (C1/C2)
	HST-R M16-M24 Stainless steel	



Concrete



Tensile zone



Fire resistance



Shock



Seismic



Corrosion resistance



High corrosion resistance



European Technical Approval



CE conformity



PROFIS
Anchor design software

Approvals / certificates

Description	Authority / Laboratory	No. / date of issue
European technical approval ^{a)}	DIBt, Berlin	ETA-98/0001 / 2013-05-08
Shockproof fastenings in civil defence installations	Federal Office for Civil Protection, Bern	BZS D 08-602 / 2008-12-15
Fire test report	DIBt, Berlin	ETA-98/0001 / 2011-06-17
Fire test report ZTV-Tunnel	IBMB, Braunschweig	UB 3332/0881-2 / 2003-07-02
Assessment report (fire)	warringtonfire	WF 166402 / 2007-10-26

a) All data given in this section according ETA-98/0001, issue 2013-05-08.

Basic loading data (for a single anchor)

All data in this section applies to

- Correct setting (See setting instruction)
- No edge distance and spacing influence
- Concrete as specified in the table
- Steel failure
- Minimum base material thickness
- Concrete C 20/25, $f_{ck,cube} = 25 \text{ N/mm}^2$

For details see Simplified design method

Mean ultimate resistance

Anchor size	Non-cracked concrete						Cracked concrete					
	M8	M10	M12	M16	M20	M24	M8	M10	M12	M16	M20	M24
Tensile $N_{R_{u,m}}$												
HST [kN]	16,6	22,3	35,2	48,7	76,0	86,1	10,3	11,6	21,9	31,1	44,9	60,2
HST-R [kN]	18,1	26,7	35,1	49,8	77,4	79,1	12,7	18,4	20,1	36,0	55,1	70,5
HST-HCR [kN]	15,2	22,7	32,4	45,5	-	-	13,8	16,2	21,5	32,4	-	-
Shear $V_{R_{u,m}}$												
HST [kN]	17,6	27,8	40,5	67,8	102,9	112,3	17,6	27,8	40,5	67,8	102,9	112,3
HST-R [kN]	15,8	24,4	35,4	61,2	95,6	137,7	15,8	24,4	35,4	61,2	95,6	137,7
HST-HCR [kN]	17,6	27,8	40,5	75,4	-	-	17,6	27,8	40,5	75,4	-	-

Characteristic resistance

Anchor size	Non-cracked concrete						Cracked concrete					
	M8	M10	M12	M16	M20	M24	M8	M10	M12	M16	M20	M24
Tensile N_{R_k}												
HST [kN]	9,0	16,0	20,0	35,0	50,0	60,0	5,0	9,0	12,0	20,0	30,0	40,0
HST-R [kN]	9,0	16,0	20,0	35,0	50,0	60,0	5,0	9,0	12,0	25,0	30,0	40,0
HST-HCR [kN]	9,0	16,0	20,0	35,0	-	-	5,0	9,0	12,0	25,0	-	-
Shear V_{R_k}												
HST [kN]	14,0	23,5	35,0	55,0	84,0	94,0	14,0	23,5	35,0	55,0	84,0	94,0
HST-R [kN]	13,0	20,0	30,0	50,0	60,0	80,0	13,0	20,0	30,0	50,0	60,0	80,0
HST-HCR [kN]	13,0	20,0	30,0	55,0	-	-	13,0	20,0	30,0	53,5	-	-

Design resistance

Anchor size	Non-cracked concrete						Cracked concrete					
	M8	M10	M12	M16	M20	M24	M8	M10	M12	M16	M20	M24
Tensile N_{R_d}												
HST [kN]	5,0	10,7	13,3	23,3	33,3	40,0	2,8	6,0	8,0	13,3	20,0	26,7
HST-R [kN]	6,0	10,7	13,3	23,3	33,3	40,0	3,3	6,0	8,0	16,7	20,0	26,7
HST-HCR [kN]	6,0	10,7	13,3	23,3	-	-	3,3	6,0	8,0	16,7	-	-
Shear V_{R_d}												
HST [kN]	11,2	18,8	28,0	44,0	67,2	62,7	11,2	18,8	28,0	44,0	60,9	62,7
HST-R [kN]	10,4	16,0	24,0	38,5	41,7	55,6	10,4	16,0	24,0	35,6	41,7	55,6
HST-HCR [kN]	10,4	16,0	24,0	44,0	-	-	10,4	16,0	24,0	35,6	-	-

Recommended loads

Anchor size	Non-cracked concrete						Cracked concrete					
	M8	M10	M12	M16	M20	M24	M8	M10	M12	M16	M20	M24
Tensile $N_{rec}^a)$												
HST [kN]	3,0	5,3	6,7	11,7	16,7	20	1,7	3,0	4,0	6,7	10	13,3
HST-R [kN]	3,0	5,3	6,7	11,7	16,7	20	1,7	3,0	4,0	8,3	10	13,3
HST-HCR [kN]	3,0	5,3	6,7	11,7	-	-	1,7	3,0	4,0	8,3	-	-
Shear $V_{rec}^a)$												
HST [kN]	4,7	7,8	11,7	18,3	28,0	31,3	4,7	7,8	11,7	18,3	28,0	31,3
HST-R [kN]	4,3	6,7	10,0	16,6	20,0	26,6	4,3	6,7	10,0	16,6	20,0	26,6
HST-HCR [kN]	4,3	6,7	10,0	18,3	-	-	4,3	6,7	10,0	17,8	-	-

a) With overall global safety factor $\gamma = 3$. The recommended loads vary according to the safety factor requirement from national regulations.

Materials

Mechanical properties of HST, HST-R, HST-HCR

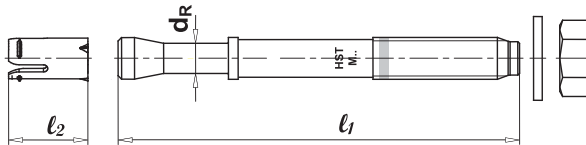
Anchor size		M8	M10	M12	M16	M20	M24
Nominal tensile strength f_{uk}	HST [N/mm ²]	800	800	800	720	700	530
	HST-R [N/mm ²]	720	700	700	650	650	650
	HST-HCR [N/mm ²]	800	800	800	800	-	-
Yield strength f_{yk}	HST [N/mm ²]	640	640	640	580	560	451
	HST-R [N/mm ²]	575	560	560	500	450	450
	HST-HCR [N/mm ²]	640	640	640	640	-	-
Stressed cross-section A_s	[mm ²]	36,6	58,0	84,3	157	245	353
Moment of resistance W	[mm ³]	31,2	62,3	109,2	277,5	540,9	935,5
Char. bending resistance $M_{Rk,s}^0$	HST [Nm]	30	60	105	240	454	595
	HST-R [Nm]	27	53	92	216	422	730
	HST-HCR [Nm]	30	60	105	266	-	-

Material quality

Part	Material	
Bolt	HST	Carbon steel, galvanised to min. 5 μ m
	HST-R	Stainless steel A4 (316)
	HST-HCR	High corrosion resistant steel 1.4529

Anchor dimensions

Anchor size		M8	M10	M12	M16	M20	M24
Shaft diameter at the cone	d_R [mm]	5,5	7,2	8,5	11,6	14,6	17,4
Minimum length of the anchor	$l_{1,min}$ [mm]	75	90	115	140	170	200
Maximum length of the anchor	$l_{1,max}$ [mm]	260	280	295	350	450	500
Length of expansion sleeve	l_2 [mm]	14,8	18,2	22,7	24,3	28,3	36

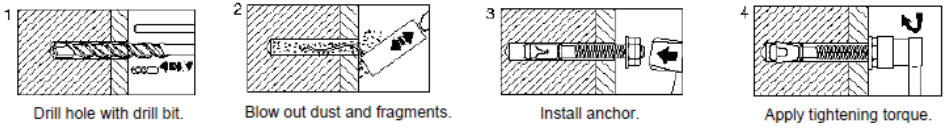


Setting

Installation equipment

Anchor size	M8	M10	M12	M16	M20	M24
Rotary hammer	TE2 – TE16				TE40 – TE70	
Other tools	hammer, torque wrench, blow out pump					

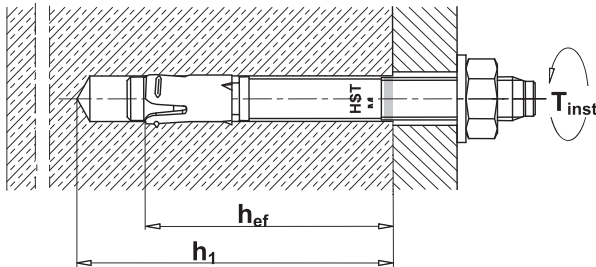
Setting instruction



For detailed information on installation see instruction for use given with the package of the product.

For technical data for anchors in diamond drilled holes please contact the Hilti Technical advisory service.

Setting details: depth of drill hole h_1 and effective anchorage depth h_{ef}



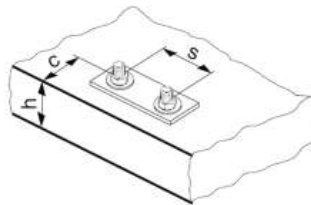
	M8x75	M8x95	M8x115	M10x90	M10x110	M10x130	M12x115	M12x145	M12x185	M12x215	M16x140	M16x165	M16x215	M16x255	M16x295	M20x170	M20x200	M24x200	M24x230
d_0 [mm] Nominal diameter of drill bit	8			10			12				16				20		24		
Head Marking (letter code)	C	E	G	E	F	H	G	I	L	N	I	J	N	R	S	K	M	M	P
T_{inst} [Nm] Torque moment	20			40 ^{a)} 45 ^{b)}			60				110				240		300		
SW [mm] Width across nut flats	13			17			19				24				30		36		
d_1 [mm] Clearance hole diameter	9			12			14				18				22		26		
h_1 [mm] Min. Depth of drill hole	65			80			95				115				140		170		
h_{ef} [mm] Effective anchorage depth	47			60			70				82				101		125		
T_{fix} [mm] Max. fasten thickness	10	30	50	10	30	50	20	50	90	120	25	50	100	140	180	30	60	30	60

a) HST-R, HST-HCR: $T_{inst} = 40$ Nm

b) HST: $T_{inst} = 45$ Nm

Setting parameters

Anchor size			M8	M10	M12	M16	M20	M24
Minimum base material thickness		h_{min} [mm]	100	120	140	160	200	250
Minimum spacing in non-cracked concrete	HST	s_{min} [mm]	60	55	60	70	100	125
		for $c \geq$ [mm]	50	80	85	110	225	255
	HST-R	s_{min} [mm]	60	55	60	70	100	125
		for $c \geq$ [mm]	60	70	80	110	195	205
	HST-HCR	s_{min} [mm]	60	55	60	70	-	-
		for $c \geq$ [mm]	50	70	80	110	-	-
Minimum spacing in cracked concrete	HST	s_{min} [mm]	40	55	60	70	100	125
		for $c \geq$ [mm]	50	70	75	100	160	180
	HST-R	s_{min} [mm]	40	55	60	70	100	125
		for $c \geq$ [mm]	50	65	75	100	130	130
	HST-HCR	s_{min} [mm]	40	55	60	70	-	-
		for $c \geq$ [mm]	50	70	75	100	-	-
Minimum edge distance in non-cracked concrete	HST	c_{min} [mm]	50	55	55	85	140	170
		for $s \geq$ [mm]	60	115	145	150	270	295
	HST-R	c_{min} [mm]	60	50	55	70	140	150
		for $s \geq$ [mm]	60	115	145	160	210	235
	HST-HCR	c_{min} [mm]	60	55	55	70	-	-
		for $s \geq$ [mm]	60	115	145	160	-	-
Minimum edge distance in cracked concrete	HST	c_{min} [mm]	45	55	55	70	100	125
		for $s \geq$ [mm]	50	90	120	150	225	240
	HST-R	c_{min} [mm]	45	50	55	60	100	125
		for $s \geq$ [mm]	50	90	110	160	160	140
	HST-HCR	c_{min} [mm]	45	50	55	60	100	125
		for $s \geq$ [mm]	50	90	110	160	160	140
Critical spacing for splitting failure and concrete cone failure	$S_{cr,sp}$ $S_{cr,N}$	[mm]	141	180	210	246	303	375
Critical edge distance for splitting failure and concrete cone failure	$C_{cr,sp}$ $C_{cr,N}$	[mm]	71	90	105	123	152	188



For spacing (edge distance) smaller than critical spacing (critical edge distance) the design loads have to be reduced.

Simplified design method

Simplified version of the design method according ETAG 001, Annex C. Design resistance according data given in ETA-98/0001, issue 2013-05-08.

- Influence of concrete strength
- Influence of edge distance
- Influence of spacing

- Valid for a group of two anchors. (The method may also be applied for anchor groups with more than two anchors or more than one edge. The influencing factors must then be considered for each edge distance and spacing. The calculated design loads are then on the safe side: They will be lower than the exact values according ETAG 001, Annex C. To avoid this, it is recommended to use the anchor design software PROFIS anchor)

The design method is based on the following simplification:

- No different loads are acting on individual anchors (no eccentricity)

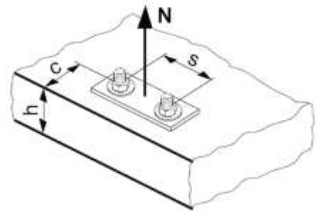
The values are valid for one anchor.

For more complex fastening applications please use the anchor design software PROFIS Anchor.

Tension loading

The design tensile resistance is the lower value of

- Steel resistance: $N_{Rd,s}$
- Concrete pull-out resistance: $N_{Rd,p} = N_{Rd,p}^0 \cdot f_B$
- Concrete cone resistance: $N_{Rd,c} = N_{Rd,c}^0 \cdot f_B \cdot f_{1,N} \cdot f_{2,N} \cdot f_{3,N} \cdot f_{re,N}$
- Concrete splitting resistance (only non-cracked concrete):
 $N_{Rd,sp} = N_{Rd,c}^0 \cdot f_B \cdot f_{1,sp} \cdot f_{2,sp} \cdot f_{3,sp} \cdot f_{h,sp} \cdot f_{re,N}$



Basic design tensile resistance

Design steel resistance $N_{Rd,s}$

$\gamma_{Ms} \geq 1.4$

Anchor size		M8	M10	M12	M16	M20	M24
$N_{Rd,s}$	HST [kN]	12,7	21,3	28,7	50,0	50,0	90,0
	HST-R [kN]	11,3	18,7	26,7	44,2	63	90,2
	HST-HCR [kN]	12,9	21,5	30,5	56,3	-	-

Design pull-out resistance $N_{Rd,p} = N_{Rd,p}^0 \cdot f_B$

$\gamma_{Mp} \geq 1.5$

Anchor size		Non-cracked concrete						Cracked concrete					
		M8	M10	M12	M16	M20	M24	M8	M10	M12	M16	M20	M24
$N_{Rd,p}^0$	HST [kN]	5,0	10,7	13,3	23,3	33,3	40,0	2,8	6,0	8,0	13,3	20,0	26,7
	HST-R [kN]	6,0	10,7	13,3	23,3	33,3	40,0	3,3	6,0	8,0	16,7	20,0	26,7
	HST-HCR [kN]	6,0	10,7	13,3	23,3	-	-	3,3	6,0	8,0	16,7	-	-

Design concrete cone resistance $N_{Rd,c} = N_{Rd,c}^0 \cdot f_B \cdot f_{1,N} \cdot f_{2,N} \cdot f_{3,N} \cdot f_{re,N}$

Design splitting resistance ^{a)} $N_{Rd,sp} = N_{Rd,c}^0 \cdot f_B \cdot f_{1,sp} \cdot f_{2,sp} \cdot f_{3,sp} \cdot f_{h,sp} \cdot f_{re,N}$

$\gamma_{Mc} \geq 1.5$

Anchor size		Non-cracked concrete						Cracked concrete					
		M8	M10	M12	M16	M20	M24	M8	M10	M12	M16	M20	M24
$N_{Rd,c}^0$	HST [kN]	9,0	15,6	19,7	24,9	34,1	47	6,4	11,2	14,1	17,8	24,4	33,5
	HST-R [kN]	10,8	15,6	19,7	24,9	34,1	47	7,7	11,2	14,1	17,8	24,4	33,5
	HST-HCR [kN]	10,8	15,6	19,7	24,9	-	-	7,7	11,2	14,1	17,8	-	-

a) Splitting resistance must only be considered for non-cracked concrete

Influencing factors

Influence of concrete strength

Concrete strength designation (ENV 206)	C 20/25	C 25/30	C 30/37	C 35/45	C 40/50	C 45/55	C 50/60
$f_B = (f_{ck,cube}/25N/mm^2)^{1/2}$ a)	1	1,1	1,22	1,34	1,41	1,48	1,55

- a) $f_{ck,cube}$ = concrete compressive strength, measured on cubes with 150 mm side length
 b) For design data of $f_{ck,cube} = 15$ and 20, please contact Hilti technical advisory service

Influence of edge distance a)

$c/c_{cr,N}$	0,1	0,2	0,3	0,4	0,5	0,6	0,7	0,8	0,9	1
$c/c_{cr,sp}$										
$f_{1,N} = 0,7 + 0,3 \cdot c/c_{cr,N} \leq 1$	0,73	0,76	0,79	0,82	0,85	0,88	0,91	0,94	0,97	1
$f_{1,sp} = 0,7 + 0,3 \cdot c/c_{cr,sp} \leq 1$										
$f_{2,N} = 0,5 \cdot (1 + c/c_{cr,N}) \leq 1$	0,55	0,60	0,65	0,70	0,75	0,80	0,85	0,90	0,95	1
$f_{2,sp} = 0,5 \cdot (1 + c/c_{cr,sp}) \leq 1$										

- a) The edge distance shall not be smaller than the minimum edge distance c_{min} given in the table with the setting details. These influencing factors must be considered for every edge distance.

Influence of anchor spacing a)

$s/s_{cr,N}$	0,1	0,2	0,3	0,4	0,5	0,6	0,7	0,8	0,9	1
$s/s_{cr,sp}$										
$f_{3,N} = 0,5 \cdot (1 + s/s_{cr,N}) \leq 1$	0,55	0,60	0,65	0,70	0,75	0,80	0,85	0,90	0,95	1
$f_{3,sp} = 0,5 \cdot (1 + s/s_{cr,sp}) \leq 1$										

- a) The anchor spacing shall not be smaller than the minimum anchor spacing s_{min} given in the table with the setting details. This influencing factor must be considered for every anchor spacing.

Influence of base material thickness

h/h_{ef}	2,0	2,2	2,4	2,6	2,8	3,0	3,2	3,4	3,6	≥ 3,68
$f_{h,sp} = [h/(2 \cdot h_{ef})]^{2/3}$	1	1,07	1,13	1,19	1,25	1,31	1,37	1,42	1,48	1,5

Influence of reinforcement

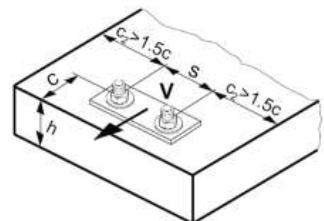
Anchor size	M8	M10	M12	M16	M20	M24
$f_{re,N} = 0,5 + h_{ef}/200mm \leq 1$	0,74 a)	0,8 a)	0,85 a)	0,91 a)	1	1

- a) This factor applies only for dense reinforcement. If in the area of anchorage there is reinforcement with a spacing ≥ 150 mm (any diameter) or with a diameter ≤ 10 mm and a spacing ≥ 100 mm, then a factor $f_{re,N} = 1$ may be applied.

Shear loading

The design shear resistance is the lower value of

- Steel resistance: $V_{Rd,s}$
- Concrete pryout resistance: $V_{Rd,cp} = V_{Rd,cp}^0 \cdot f_B \cdot f_{1,N} \cdot f_{2,N} \cdot f_{3,N} \cdot f_{re,N}$
- Concrete edge resistance: $V_{Rd,c} = V_{Rd,c}^0 \cdot f_B \cdot f_h \cdot f_4$



Basic design shear resistance

Design steel resistance $V_{Rd,s}$

 $\gamma_{Ms} \geq 1.25$

Anchor size		M8	M10	M12	M16	M20	M24
$V_{Rd,s}$	HST [kN]	11,2	18,8	28,0	44,0	67,2	62,7
	HST-R [kN]	10,4	16,0	24,0	38,5	41,7	55,6
	HST-HCR [kN]	10,4	16,0	24,0	44,0	-	-

Design concrete pryout resistance $V_{Rd,cp} = V_{Rd,cp}^0 \cdot f_B \cdot f_{1,N} \cdot f_{2,N} \cdot f_{3,N} \cdot f_{re,N}$

 $\gamma_{Mc} = 1.5$

Anchor size		Non-cracked concrete						Cracked concrete					
		M8	M10	M12	M16	M20	M24	M8	M10	M12	M16	M20	M24
$V_{Rd,cp}^0$	HST [kN]	21,6	31,2	43,3	62,4	85,3	117,4	15,5	22,3	30,9	44,5	60,9	83,8
	HST-R [kN]	21,6	31,2	39,4	49,9	68,2	93,9	15,5	22,3	28,1	35,6	48,7	67,1
	HST-HCR [kN]	21,6	31,2	39,4	49,9	-	-	15,5	22,3	28,1	35,6	-	-

Design concrete edge resistance $V_{Rd,c} = V_{Rd,c}^0 \cdot f_B \cdot f_{\beta} \cdot f_h \cdot f_4$

 $\gamma_{Mc} = 1.5$

Anchor size		Non-cracked concrete						Cracked concrete					
		M8	M10	M12	M16	M20	M24	M8	M10	M12	M16	M20	M24
$V_{Rd,c}^0$	HST [kN]	2,7	4,4	6,1	8,6	13,2	20,0	1,9	3,2	4,3	6,2	9,4	14,3
	HST-R [kN]	2,7	4,4	6,1	8,6	13,2	20,0	1,9	3,2	4,3	6,2	9,4	14,3
	HST-HCR [kN]	2,7	4,4	6,1	8,6	-	-	1,9	3,2	4,3	6,2	-	-

a) For anchor groups only the anchors close to the edge must be considered.

Influencing factors

Influence of concrete strength

Concrete strength designation (ENV 206)	C 20/25	C 25/30	C 30/37	C 35/45	C 40/50	C 45/55	C 50/60
$f_B = (f_{ck,cube}/25N/mm^2)^{1/2}$ a)	1	1,1	1,22	1,34	1,41	1,48	1,55

- a) $f_{ck,cube}$ = concrete compressive strength, measured on cubes with 150 mm side length
 b) For design data of $f_{ck,cube} = 15$ and 20, please contact Hilti technical advisory service

Influence of edge distance ^{a)}

$c/c_{cr,N}$	0,1	0,2	0,3	0,4	0,5	0,6	0,7	0,8	0,9	1
$f_{1,N} = 0,7 + 0,3 \cdot c/c_{cr,N} \leq 1$	0,73	0,76	0,79	0,82	0,85	0,88	0,91	0,94	0,97	1
$f_{2,N} = 0,5 \cdot (1 + c/c_{cr,N}) \leq 1$	0,55	0,60	0,65	0,70	0,75	0,80	0,85	0,90	0,95	1

a) The edge distance shall not be smaller than the minimum edge distance c_{min} given in the table with the setting details. These influencing factors must be considered for every edge distance.

Influence of anchor spacing ^{a)}

$s/s_{cr,N}$	0,1	0,2	0,3	0,4	0,5	0,6	0,7	0,8	0,9	1
$f_{3,N} = 0,5 \cdot (1 + s/s_{cr,N}) \leq 1$	0,55	0,60	0,65	0,70	0,75	0,80	0,85	0,90	0,95	1

a) The anchor spacing shall not be smaller than the minimum anchor spacing s_{min} given in the table with the setting details. This influencing factor must be considered for every anchor spacing.

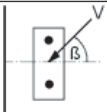
Influence of reinforcement

Anchor size	M8	M10	M12	M16	M20	M24
$f_{re,N} = 0,5 + h_{ef}/200\text{mm} \leq 1$	0,74 ^{a)}	0,8 ^{a)}	0,85 ^{a)}	0,91 ^{a)}	1	1

a) This factor applies only for dense reinforcement. If in the area of anchorage there is reinforcement with a spacing ≥ 150 mm (any diameter) or with a diameter ≤ 10 mm and a spacing ≥ 100 mm, then a factor $f_{re,N} = 1$ may be applied.

Influence of angle between load applied and the direction perpendicular to the free edge

Angle β	0° - 55°	60°	65°	70°	75°	80°	85°	90° - 180°
f_{β}	1	1,07	1,14	1,23	1,35	1,50	1,71	2



Influence of base material thickness

h/c	0,15	0,3	0,45	0,6	0,75	0,9	1,05	1,2	1,35	$\geq 1,5$
$f_h = \{h/(1,5 \cdot c)\}^{2/3} \leq 1$	0,22	0,34	0,45	0,54	0,63	0,71	0,79	0,86	0,93	1,00

Influence of anchor spacing and edge distance^{a)} for concrete edge resistance: f_4

$$f_4 = (c/h_{ef})^{1,5} \cdot (1 + s / [3 \cdot c]) \cdot 0,5$$

c/h _{ef}	Single anchor	Group of two anchors s/h _{ef}															
		0,75	1,50	2,25	3,00	3,75	4,50	5,25	6,00	6,75	7,50	8,25	9,00	9,75	10,50	11,25	
0,50	0,35	0,27	0,35	0,35	0,35	0,35	0,35	0,35	0,35	0,35	0,35	0,35	0,35	0,35	0,35	0,35	0,35
0,75	0,65	0,43	0,54	0,65	0,65	0,65	0,65	0,65	0,65	0,65	0,65	0,65	0,65	0,65	0,65	0,65	0,65
1,00	1,00	0,63	0,75	0,88	1,00	1,00	1,00	1,00	1,00	1,00	1,00	1,00	1,00	1,00	1,00	1,00	1,00
1,25	1,40	0,84	0,98	1,12	1,26	1,40	1,40	1,40	1,40	1,40	1,40	1,40	1,40	1,40	1,40	1,40	1,40
1,50	1,84	1,07	1,22	1,38	1,53	1,68	1,84	1,84	1,84	1,84	1,84	1,84	1,84	1,84	1,84	1,84	1,84
1,75	2,32	1,32	1,49	1,65	1,82	1,98	2,15	2,32	2,32	2,32	2,32	2,32	2,32	2,32	2,32	2,32	2,32
2,00	2,83	1,59	1,77	1,94	2,12	2,30	2,47	2,65	2,83	2,83	2,83	2,83	2,83	2,83	2,83	2,83	2,83
2,25	3,38	1,88	2,06	2,25	2,44	2,63	2,81	3,00	3,19	3,38	3,38	3,38	3,38	3,38	3,38	3,38	3,38
2,50	3,95	2,17	2,37	2,57	2,77	2,96	3,16	3,36	3,56	3,76	3,95	3,95	3,95	3,95	3,95	3,95	3,95
2,75	4,56	2,49	2,69	2,90	3,11	3,32	3,52	3,73	3,94	4,15	4,35	4,56	4,56	4,56	4,56	4,56	4,56
3,00	5,20	2,81	3,03	3,25	3,46	3,68	3,90	4,11	4,33	4,55	4,76	4,98	5,20	5,20	5,20	5,20	5,20
3,25	5,86	3,15	3,38	3,61	3,83	4,06	4,28	4,51	4,73	4,96	5,18	5,41	5,63	5,86	5,86	5,86	5,86
3,50	6,55	3,51	3,74	3,98	4,21	4,44	4,68	4,91	5,14	5,38	5,61	5,85	6,08	6,31	6,55	6,55	6,55
3,75	7,26	3,87	4,12	4,36	4,60	4,84	5,08	5,33	5,57	5,81	6,05	6,29	6,54	6,78	7,02	7,26	7,26
4,00	8,00	4,25	4,50	4,75	5,00	5,25	5,50	5,75	6,00	6,25	6,50	6,75	7,00	7,25	7,50	7,75	7,75
4,25	8,76	4,64	4,90	5,15	5,41	5,67	5,93	6,18	6,44	6,70	6,96	7,22	7,47	7,73	7,99	8,25	8,25
4,50	9,55	5,04	5,30	5,57	5,83	6,10	6,36	6,63	6,89	7,16	7,42	7,69	7,95	8,22	8,49	8,75	8,75
4,75	10,35	5,45	5,72	5,99	6,27	6,54	6,81	7,08	7,36	7,63	7,90	8,17	8,45	8,72	8,99	9,26	9,26
5,00	11,18	5,87	6,15	6,43	6,71	6,99	7,27	7,55	7,83	8,11	8,39	8,66	8,94	9,22	9,50	9,78	9,78
5,25	12,03	6,30	6,59	6,87	7,16	7,45	7,73	8,02	8,31	8,59	8,88	9,17	9,45	9,74	10,02	10,31	10,31
5,50	12,90	6,74	7,04	7,33	7,62	7,92	8,21	8,50	8,79	9,09	9,38	9,67	9,97	10,26	10,55	10,85	10,85

a) The anchor spacing and the edge distance shall not be smaller than the minimum anchor spacing s_{min} and the minimum edge distance c_{min} .

Combined tension and shear loading

For combined tension and shear loading see section "Anchor Design".

