

Hilti HT Door Frame Anchor

Product Information	1
Technical Data	2-4
Country of Origin	5
Project Reference	6

 **Recycling one ton of paper saves 17 trees and 7000 gallons of water.**
Please consider your environmental responsibility before using the hard copy version!

Metal frame anchor HT



BASE MATERIALS

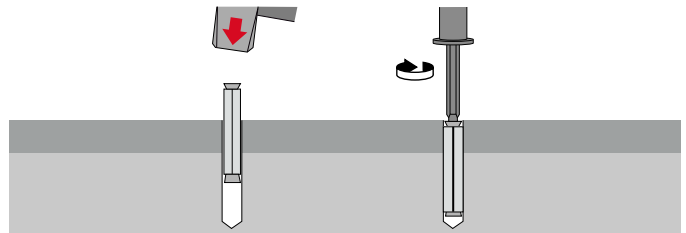
- Concrete (aerated)
- Concrete (uncracked)
- Masonry (hollow)
- Masonry (solid)
- Some types of natural stone

APPLICATIONS

- Fastening door and window frames in a variety of base materials

ADVANTAGES

- No risk of distortion or forces of constraint
- Expansion cone cannot be lost
- All metal construction



These are abbreviated instructions which may vary according to the application.

Technical data	
Environmental conditions	Indoor, dry conditions
Head configuration	Countersunk, Flat head
Material composition	Steel, 4.6 grade, zinc-plated (min.5 µm), Sheet steel, sendzimir zincplated to approx. 16µm
Material, corrosion	Steel, zinc-plated
Type of fastening	Through-fastening
Approvals / test reports	Fire

Order Now



Ordering designation	Anchor size	Anchor length	Drill bit diameter	Drilling depth	Max. fixture thickness at standard embedment depth	Sales pack quantity	Item number
HT 10X72	10 mm	72 mm	10 mm	50 mm	42 mm	100 pc	369263
HT 10X92	10 mm	92 mm	10 mm	50 mm	62 mm	100 pc	369264
HT 10X112	10 mm	112 mm	10 mm	50 mm	82 mm	100 pc	369265
HT 10X132	10 mm	132 mm	10 mm	50 mm	102 mm	100 pc	369266
HT 10X152	10 mm	152 mm	10 mm	50 mm	122 mm	100 pc	369267
HT 10X182	10 mm	182 mm	10 mm	50 mm	152 mm	100 pc	369268
HT 10X202	10 mm	202 mm	10 mm	50 mm	172 mm	100 pc	369269

Please visit Hilti website for the latest item numbers and related products

HT Light duty metal anchor

Economical metal frame anchor

Anchor version



HT
(M8-M10)

Benefits

- Fastening door and window frames
- No risk of distortion or forces of constraint
- Expansion cone cannot be lost

Base material



Uncracked concrete



Solid brick



Hollow brick



Autoclaved aerated concrete

Load conditions



Fire resistance

Approvals / certificates

Description	Authority / Laboratory	No. / date of issue
Fire test report	IBMB, Braunschweig	UB 3016/1114-CM / 2006-03-13
Assessment report (fire)	warringtonfire	WF 327804/A / 2013-07-10

Basic loading data (for a single anchor)

All data in this section applies to:

- Correct setting (See setting instruction)
- No edge distance and spacing influence
- Base material as specified in the table
- Non-cracked concrete: $f_{cc} \geq 20 \text{ N/mm}^2$
- Minimum base material thickness

Characteristic resistance

Anchor size		HT 8	HT 10
Concrete, $f_{cc} = 30 \text{ N/mm}^2$	N_{Rk} [kN]	4,2	5,0
	V_{Rk} [kN]	6,6	7,0
Aerated concrete PP2 ^{a)}	N_{Rk} [kN]	-	0,3
	V_{Rk} [kN]	-	0,5
Solid brick Mz 12	N_{Rk} [kN]	1,8	2,6
	V_{Rk} [kN]	-	5,0
Sand-lime solid brick, KS 12	N_{Rk} [kN]	1,8	2,6
	V_{Rk} [kN]	-	5,0
Sand-lime hollow brick, KSL	N_{Rk} [kN]	-	1,5
	V_{Rk} [kN]	-	0,5

a) Rotary drilling only.

Recommended loads

Anchor size		HT 8	HT 10
Concrete, $f_{cc}=30$ N/mm ²	N_{Rec} [kN]	1,4	1,7
	V_{Rec} [kN]	0,5	0,5
Aerated concrete PP2 a)	N_{Rec} [kN]	-	0,1
	V_{Rec} [kN]	-	0,15
Solid brick Mz 12	N_{Rec} [kN]	0,6	0,8
	V_{Rec} [kN]	-	0,5
Sand-lime solid brick, KS 12	N_{Rec} [kN]	0,6	0,8
	V_{Rec} [kN]	-	0,5
Sand-lime hollow brick, KSL	N_{Rec} [kN]	-	0,5
	V_{Rec} [kN]	-	0,15

a) Rotary drilling only.

Materials

Material quality

Part	Material
Bolt	Steel strength 4.8, zinc plated to 5 μ m
Sleeve	Steel 02 DIN 17162, sendzimir zinc plated to 20 μ m

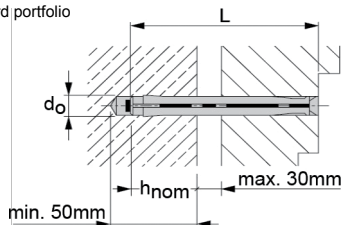
Setting

Setting details a)

Anchor size		HT 8	8x72	8x92	8x112	8x132	8x152	8x182	
Nominal diameter of drill bit	d_0 [mm]		8	8	8	8	8	8	
Depth of drill hole	h_1 [mm]		50	50	50	50	50	50	
Anchorage depth	h_{nom} [mm]		30	30	30	30	30	30	
Anchor length	L [mm]		72	92	112	132	152	182	
Torque moment	h_{min} [Nm]		100	100	100	100	100	100	
Minimum base material thickness	T_{inst}^b [mm]		4	4	4	4	4	4	
Drill bit			TE-CX-8/17		TE-CX-8/22		TE-CX-8/27		
Anchor size		HT 10	10x72	10x92	10x112	10x132	10x152	10x182	10x202
Nominal diameter of drill bit	d_0 [mm]		10	10	10	10	10	10	10
Depth of drill hole	h_1 [mm]		50	50	50	50	50	50	50
Anchorage depth	h_{nom} [mm]		30	30	30	30	30	30	30
Anchor length	L [mm]		72	92	112	132	152	182	202
Torque moment	h_{min} [Nm]		100	100	100	10	10	10	10
Minimum base material thickness	T_{inst}^b [mm]		8/4	8/4	8/4	8/4	8/4	8/4	8/4
Drill bit			TE-C-10/17		TE-C-10/22		TE-C-10/27		TE-C-10/37

a) Please refer to the product catalogue on the Hilti Hong Kong website for standard portfolio

b) First value: solid base material, second value: hollow base material.

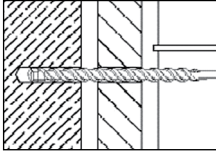
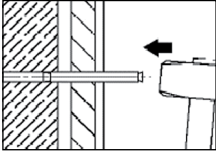
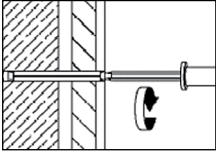


Installation equipment

Anchor size	HT 8	10x92
Rotary hammer	TE2-TE16	
Other tools	hammer, screwdriver	

Setting instruction

* For detailed information on installation see instruction for use given with the package of the product.

Setting instruction		
1. Drill hole with drill bit 	2. Install anchor 	3. Drive screw into anchor 

Attn. : To whom it may concern

Date : 6th May 2019

Ref. : 039/AM/YW/19

Subject : Hilti HT Door Frame Anchor

Dear Sir / Madam,

Enclosed please find the information of Hilti HT Door Frame Anchor

Brand Name : Hilti

Model Name : HT

Manufacturer : Hilti Corporation

Address of Manufacturer : FL-9494, Principality of Liechtenstein.

Supplier : Hilti (Hong Kong) Ltd

Address of Supplier : 701-704, 7/F, Tower A, Manulife Financial Centre, 223 Wai Yip St.
Kwun Tong, Hong Kong

Country of Origin : China

Name of factory : Hsin Chang Hardware Ind. (OEM Partner of Hilti Corporation)

Should you have further question, please do not hesitate to contact our Technial Representatives or Customer Service Hotline at 8228-8118.

Yours sincerely,



Yahamali Wijesinghe
Product Manager
Hilti (Hong Kong) Ltd.

Hilti HT Door Frame Anchor Project Reference

Year	Project Name	Contractor	Application	Project Type
2017	RANK & FILE QUARTERS CUSTOM & EXCI DEPT	LEUNG'S WOODEN CO.	DOOR FRAME FIXING	ASD
2017	WEST KOWLOON XIQU CENTRE	THE JARDINE ENG CORP LTD	M&E FIXING	ASD
2017	CHEUNG SHAWAN WHOLESALE FOOD MARKET	KWONG YIN WING KOO TIMBER CO LTD	DOOR FRAME FIXING	HOUSING
2017	361-365 QUEEN'S RD WEST	LEUNG'S WOODEN CO.	DOOR FRAME FIXING	PRIVATE/COMMERCIAL
2017	31-69 CHAI WAN RD, SHAU KEI WAN	PING KEE CONSTRUCTION (CHINA) LTD	DOOR FRAME FIXING	PRIVATE/RESIDENTIAL
2017	MID-LEVELS "UNIVERSITY HEIGHTS"	LAHINE ENGINEERING LIMITED	DOOR FRAME FIXING	PRIVATE/RESIDENTIAL
2017	8 LEUNG TAK ST SHK RES	LAHINE ENGINEERING LIMITED	DOOR FRAME FIXING	PRIVATE/RESIDENTIAL
2018	NAM CHEONG STATION SHK RESIDENCES	HOI SING DECORATION	INTERIOR FIXING	PRIVATE/RESIDENTIAL
2018	FO TAN KWAI TEI ST PH1&2 HOUSING	KWONG YIN WING KOO TIMBER CO LTD	DOOR FRAME FIXING	HOUSING
2018	MID-LEVELS "UNIVERSITY HEIGHTS"	LAHINE ENGINEERING LIMITED	DOOR FRAME FIXING	PRIVATE/RESIDENTIAL
2018	WEST KOWLOON GOV. OFFICES	THE JARDINE ENG CORP LTD	M&E FIXING	ASD
2019	LOK WAH ESTATE	LONGMAN ENGINEER COMPANY	DOOR FRAME FIXING	HOUSING
2019	FANLING AREA 49	KWONG YIN WING KOO TIMBER CO LTD	INTERIOR FIXING	HOUSING
2019	LIANTANG BOUNDARY CP	ROXAS (FAR EAST) LIMITED	INTERIOR FIXING	CEDD
2019	13-15 SZE SHAN ST.	LAHINE ENGINEERING LIMITED	INTERIOR FIXING	PRIVATE/RESIDENTIAL