



Hilti LH Sprinkler Loop Hanger

Submission Folder

Product Information	2
Technical Data	4
Letters	
Certificate of compliance	5
FM cert	8
FSD letter	15
Country of Origin	16
Job reference	17



Recycling one ton of paper saves 17 trees and 7000 gallons of water.
Please consider your environmental responsibility before using the hard copy version!

5.0 MODULAR SYSTEM HANGERS

LOOP HANGERS

Product Features



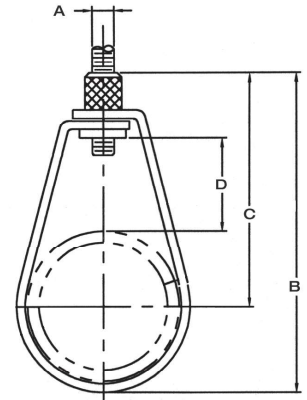
Material Specifications

Material and finish	Pre-galvanized carbon steel with zinc-electroplated insert nut
Approvals	Factory Mutual (FM) 1/2 to 8
Listings	Underwriters Laboratories (UL-cUL)
Conforms with	<ul style="list-style-type: none"> Federal Specification WW-H-171 (Type 10) Manufacturers Standardization Society ANSI/MSS-SP-58 (Type 10)
Installation	Install in accordance with ANSI/MSS-SP-58



Ordering Information / Technical Data

Description	Weight/ Box (lb)	Pipe Size	Rod Size A	B	C	D	Qty	Item No.	Max Allowable Load (lb) ¹	Max. recom. load [lbs] / [N]	Approval
LH 1/2"	7	1/2"	3/8"	2-3/4"	2-5/16"	1-1/16"	100	388612	300	440 2000	FM / UL
LH 3/4"	7	3/4"	3/8"	3-1/16"	2-1/2"	1-1-16"	100	388613	300		
LH 1"	8.25	1"	3/8"	3-5/16"	2-5/8"	1-1/16"	100	388614	300		
LH 1-1/4"	10	1-1/4"	3/8"	3-9/16"	2-11/16"	1"	100	388615	300		
LH 1-1/2"	10	1-1/2"	3/8"	3-13/16"	2-13/16"	1"	100	388616	300		
LH 2"	10	2"	3/8"	4-1/4"	3-1/16"	1"	100	388617	300	992 4500	FM / UL
LH 2-1/2"	30	2-1/2"	3/8"	5-9/16"	3-15/16"	1-5/8"	100	388618	525		
LH 3"	16	3"	3/8"	6-9/16"	4-5/8"	2"	50	388619	525		
LH 4"	16.5	4"	3/8"	7-9/16"	5-3/16"	2-1/16"	50	388620	650	1763 8000	FM / UL
LH 6"	5	6"	1/2"	11-5/16"	7-7/8"	3-7/16"	20	388621	1000		
LH 8"	22.5	8"	1/2"	12-7/8"	8-7/16"	3"	15	388622	1000		



¹ Based on a safety factor of 3,5

PIPE CLAMP PORTFOLIO OVERVIEW



Pipe clamp types		MP-L-I	MP-H-I MP-H	MP-P-I MP-P	MP-U-I MP-U <small>NEW</small>	MP-U-G MP-U <small>NEW</small>	MP-M-I MP-M	MP-M-IS	MP-M-XI MP-MX	MRP-RPC	MI-CF MI-CF LS	MIP-H/-M/-T <small>NEW</small>	MRP-KF MP-KF 170	MV-PI MV-PIF MV-P	LH	MP-SPN	MP-MS	MFP-PC	MFP-KF	MP-PI HDG	MP-MI-F MP-M-F	MP-MXI-F MP-MX-F	MFP-L-F/ MFP-F	MP-SRNI MP-SRN	MPN-R	MP-MRI MP-MR	MP-MRXI						
Characteristics		Zinc plated																		Hot-dip galvanized				Stainless steel									
Material		Zinc plated																		Hot-dip galvanized				Stainless steel									
Load class/Product type		Light duty				Medium duty				Heavy duty				Refrigeration				Ventilation		Sprinkler		Fixed Points		Heavy duty				Light duty		Heavy duty			
Applications	Fresh water distribution pipes	•	•	•	•	•	•	•	•											•	•	•		•	•	•	•						
	Heating pipes	•	•	•	•	•	•	•	•											•	•	•	•	•	•	•	•						
	Gas distribution pipes	•	•	•	•	•	•	•	•												•	•	•		•	•	•	•					
	Waste water pipes	•	•	•	•	•	•	•	•												•	•	•		•		•	•					
	Light industrial piping								•	•											•	•	•		•	•	•	•					
	Chilled water/ Air conditioning pipes										•	•	•	•							•												
	Refrigeration pipes (sub-zero temperatures)										•	•	•	•							•												
	Ventilation pipes															•																	
	Sprinkler pipes																•	•	•														
	Properties	Inlay material	EPDM	EPDM	EPDM	TPE	Flocked EPDM - gliding surface	EPDM	Silicone	EPDM	Closed-cell polyurethane foam	Closed-cell polyurethane foam	CFC-free PUR/PIR	CFC-free PUR/PIR	EPDM	EPDM				Thermal insulation	EPDM	EPDM	EPDM	EPDM	EPDM	EPDM	EPDM	EPDM					
Threaded rod/tube size		M8 or M8/M10	M8/M10	M8/M10 or M12	M8 or M8/M10 or M8/M10/Q16 or M8/M10/½"	M8 or M8/M10 or M8/M10/½"	M10/M12 or M16 or ½" or ¾"	M10/M12 or M16	M10/M12 or M16 or ½" or 1"	M8/M10 or M16	M8/M10 or M10/M12 or M16	M8/M10 or M16	M8/M10 or M12/½" or M16/¾"	M16 or M20 or M24	M8/M10 or w/o head	M8/M10 or ½"	M8/M10 or w/o head	M10 or M12	M8 or M10 or M12 or M16	M8/M10 or M10 or M12	M20	M20	M8/M10	M10	M10/M12 or M16	M20	M8 or M10	M8 or M8/M10 or M10/M12	M10 or M12 or M16 or ½" or ¾"	M16			
Quick closure		•	•	•	•	•	•	•	•	•	•	•	•	•	•	•	•	•	•	•	•	•	•	•	•	•	•	•					
Clamping range		9-170 mm	8-172 mm	11-326 mm 15-170 mm	9-170 mm 13-176 mm	16-56 mm 16-160 mm 50-160 mm	15-250 mm	15-250 mm	60-508 mm	10.2-219.1 mm	15-108 mm 57-273 mm	10-169 mm	10-410 mm	10-221 mm	12.7-219.1 mm	219.7-711.2 mm	80-1250 mm	27-224 mm	26.9-219.1 mm	20-168 mm	21-326 mm	76.1-609 mm	11-219.1 mm	20-90 mm	60-508 mm	21-273 mm	15-65 mm	12-220 mm	15-224 mm	244-508 mm			
Load range		400-1350 N	600-1500 N	750-2500 N 750-1500 N	800-2400 N	800-2400 N	1800-4500 N 2000-5000 N	1800-4500 N	2400-17000 N 4000-19000 N	40-2.850 N	36-1250 N 610-3840 N	40-2600 N	40-11400 N	40-5000 N	40-5260 N	6500-17000 N	700-1500 N	1250-1500 N	700-1200 N	2000-8000 N	2000-8500 N	2000-5000 N	no vertical load	no vertical load	750-2250 N	1800 N	2400-17000 N 4000-19000 N	no vertical load	1200-1600 N	2000 N	1200-2500 N	3000-5000 N	10000-17000 N
Temperature resistance range		-40°C +110°C	-40°C +110°C	-40°C +110°C	-40°C +110°C	-50°C +110°C	-40°C +110°C	-50°C +110°C	-50°C +200°C	-50°C +120°C	-30°C +105°C	-80°C +140°C	-40°C +105°C	-45°C +105°C	-40°C +110°C	-40°C +110°C	-	-	-	-	-45°C +105°C	-40°C +110°C	-50°C +120°C	-50°C +120°C	-	-50°C +120°C	-	-50°C +120°C	-	-50°C +120°C	-		
Sound reduction		18.5 dB (A)	17 dB (A)	16 dB (A)	19.4 dB (A)	22 dB (A)	19 dB (A)	23 dB (A)	16 dB (A)	22.5 dB (A)	-	>19 dB (A)	>21 dB (A)	>20 dB (A)	16 dB (A)	17 dB (A) ≤ 200 21 dB (A) ≥ 224	-	-	-	-	16 dB (A)	18 dB (A)	16 dB (A)	-	15 dB (A)	-	18 dB (A)	-	16 dB (A)				
Insulation thickness		-	-	-	-	-	-	-	-	19 mm	20-50 mm	13-16 mm	20-25 mm	31-50 mm	30-66 mm	60 mm	-	-	-	-	30-60 mm	-	-	-	-	-	-	-	-				
Thermal conductivity		-	-	-	-	-	-	-	-	0.034 W/mK	0.030 W/mK	0.036 W/mK	0.043 W/mK	0.049 W/mK	-	-	-	-	-	0.042 W/mK	-	-	-	-	-	-	-	-					
Performance		Multi-Line	Product category	••••○	••••○	••••○	••••○	••••○	••••○	••••○	••••○	••••○	••••○	••••○	••••○	••••○	••••○	••••○	••••○	••••○	••••○	••••○	••••○	••••○	••••○	••••○	••••○	••••○	••••○				
	Approvals	Certificates / Approvals / Reports																															

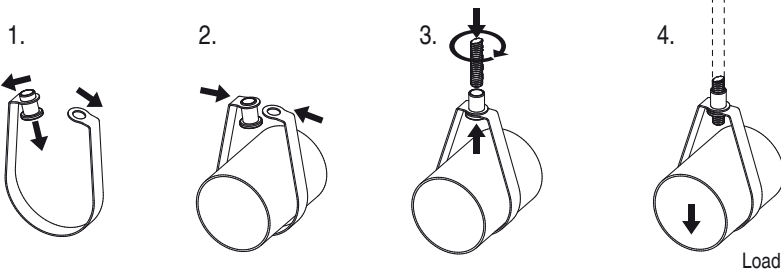
Legende
 • Suitable for application / Yes
 ○ Plenty suitable for application
 - Not relevant / No

Multi-Line classification
 ••••○ Ultimate
 ••••• Premium
 ••••○ Standard

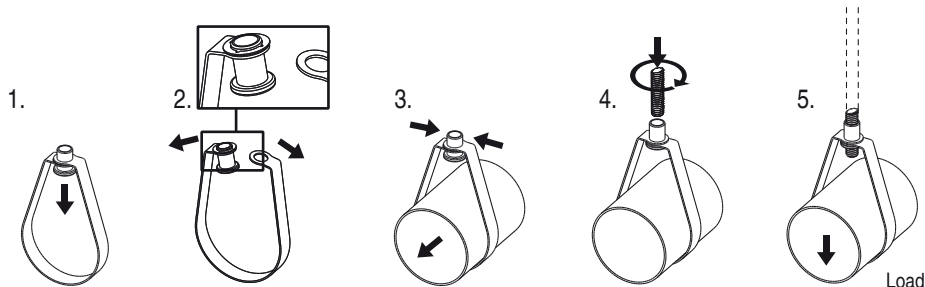
Certificates / Approvals / Reports
 Sound reduction tested
 Building material class B2/E
 Fire-tested / certified
 European Technical Assessment (ETA)
 DNV-GL certified
 Shock certified
 VdS VdS approved
 FM approved
 UL approved
 British Standard

Installation instruction loop hanger

Installation option sizes 1/2" to 2" (nut caulked):



Installation option sizes 2-1/2" to 8" (nut with washer):



nominal Pipe size	Rod size [RS]		Approval
1/2"	3/8"	M10	UL
3/4"			FM / UL
1"			FM / UL
1-1/4"			FM / UL
1-1/2"			FM / UL
2"			FM / UL
2-1/2"			FM / UL
3"			FM / UL
4"	FM / UL		
6"	1/2"	M12	FM / UL
8"			FM / UL

CERTIFICATE OF COMPLIANCE

Certificate Number 2021-04-30-EX15279
Report Reference EX15279-1994-04-22
EX15279-1999-08-23
EX15279-1999-08-24
EX15279-2009-03-20
EX15279-2017-08-14
Issue Date 2021-APRIL-30

Issued to: **HILTI AKTIENGESELLSCHAFT**
Feldkircherstrass 100
P.O. Box 333
Schaan, 9494 Liechtenstein

This is to certify that representative samples of Hangers, Pipe
Hangers, Pipe Certified for Canada
See addendum below for models

Have been investigated by UL in accordance with the Standard(s) indicated on this Certificate.

Standard(s) for Safety: CAN/UL 203 – Pipe Hanger Equipment for Fire Protection Service

Additional Information: See the UL Online Certifications Directory at www.ul.com/database for additional information

Only those products bearing the UL Certification Mark should be considered as being covered by UL's Certification and Follow-Up Service.

Look for the UL Certification Mark on the product.



Bruce Mahrenholz, Director North American Certification Program

UL LLC

Any information and documentation involving UL Mark services are provided on behalf of UL LLC (UL) or any authorized licensee of UL. For questions, please contact a local UL Customer Service Representative at <http://ul.com/aboutul/locations/>



CERTIFICATE OF COMPLIANCE

Certificate Number 2021-04-30-EX15279
Report Reference EX15279-1994-04-22
 EX15279-1999-08-23
 EX15279-1999-08-24
 EX15279-2009-03-20
 EX15279-2017-08-14
Issue Date 2021-APRIL-30

Pipe hangers

Model	Hanger Type	Rod Size, in.	NPS*	Comments
MAB-M10	Universal Beam Clamp	M10	4	—
MAB-11	Universal Beam Clamp	M10	4	—
MAB-M12	Universal Beam Clamp	M12	8	—
MAB-13	Universal Beam Clamp	M12	8	—
MAB-M16	Universal Beam Clamp	M16	12	—
MAB-17	Universal Beam Clamp	M16	12	—
LH	Band Hanger	3/8	1/2, 3/4, 1, 1-1/4, 1-1/2, 2, 2-1/2, 3, 4	—
LH	Band Hanger	1/2	6, 8	—
MP-SP	Band Hanger	10 mm	Up to 4	—
MP-SP	Band Hanger	12 mm	5, 6	—
MP-SP	Band Hanger	16 mm	8	—
SDC-EG	Clevis Hanger	3/8	1/2, 3/4, 1, 1-1/4, 1-1/2, 2	—
SDC-EG	Clevis Hanger	1/2	2-1/2, 3	—
SDC-EG	Clevis Hanger	5/8	4, 5	—



Bruce Mahrenholz, Director North American Certification Program

UL LLC

Any information and documentation involving UL Mark services are provided on behalf of UL LLC (UL) or any authorized licensee of UL. For questions, please contact a local UL Customer Service Representative at <http://ul.com/aboutul/locations/>



CERTIFICATE OF COMPLIANCE

Certificate Number 2021-04-30-EX15279
Report Reference EX15279-1994-04-22
 EX15279-1999-08-23
 EX15279-1999-08-24
 EX15279-2009-03-20
 EX15279-2017-08-14
Issue Date 2021-APRIL-30

SDC-EG	Clevis Hanger	3/4	6, 8	—
SDC-EG	Clevis Hanger	7/8	10, 12	—
SLC-EG	Clevis Hanger	3/8	2, 2-1/2	—
SLC-EG	Clevis Hanger	1/2	3	—
SLC-EG	Clevis Hanger	5/8	4, 5	—
SLC-EG	Clevis Hanger	3/4	6, 8	—
MP-SPN	Loop Hanger	M10	3/4, 1, 1-1/4, 1-1/2, 2, 2-1/2, 3, 4	—
MP-SPN	Loop Hanger	M12	133mm, 5, 159 mm, 6	—
MP-SPN	Loop Hanger	M16	219.1 mm	—
MP-US	U-Strap	N/A	1/2, 3/4, 1, 1-1/4, 1-1/2, 2, 2-1/2, 3, 3-1/2, 108mm, 4, 133mm, 5, 159mm, 6, 8, 10, 12	Can be installed on the bottom, side, or top (surge restraint) orientations
MP-UB (metric)	U-Bolt	N/A	1/2, 3/4, 1, 1-1/4, 1-1/2, 2, 2-1/2, 3, 3-1/2, 108mm, 4, 133mm, 5, 159mm, 6, 8, 10, 12	Metric threads; Can be installed on the bottom, side, or top (surge restraint) orientations
MP-UB (NPT)	U-Bolt	N/A	1-1/2, 2, 2-1/2, 3, 3-1/2, 4, 5, 6, 8, 10, 12	NPT threads; Can be installed on the bottom, side, or top (surge restraint) orientations
MP-MS	Pipe Clamp	10 mm	1/2, 3/4, 1, 1-1/4, 1-1/2, 2, 2-1/2, 3	—
MP-MS	Pipe Clamp	12 mm	4, 5, 6	—
MF-TSH	Trapezoidal Bracket	10 mm	3/4, 1	—

* NPS = Nominal pipe size



Bruce Mahrenholz, Director North American Certification Program

UL LLC

Any information and documentation involving UL Mark services are provided on behalf of UL LLC (UL) or any authorized licensee of UL. For questions, please contact a local UL Customer Service Representative at <http://ul.com/aboutul/locations/>



Pipe Hangers

Pipe hangers are used to support a sprinkler piping system from the building structure. Two or more listed components may be required to form a complete hanger assembly. The specific components required depend upon the type of building construction and the pipe size.

Pipe Clamps

A type of pipe hanger that clamps around a pipe to connect the pipe to the remainder of the pipe hanger assembly.

Hilti AG, Pipe Clamps

Product Specification

Model No	Description	Hanger Rod Size, in (mm)	Nominal Pipe Size	
			in	(mm)
MP-MS	Pipe Clamp	3/8 (M10)	(68/72) through 4	(N/A)
MP-MS 2	Pipe Clamp	(M12)	133 mm through 6	(N/A)
MP-MS 2	Pipe Clamp	5/8 (M16)	N/A	(219)
MP-MX 125	Pipe Ring Clamp	5/8 (M16)	5	(125)
MP-MX 133	Pipe Ring Clamp	5/8 (M16)	N/A	(133)
MP-MX 5	Pipe Ring Clamp	5/8 (M16)	5	(125)
MP-MX 159	Pipe Ring Clamp	5/8 (M16)	N/A	(159)
MP-MX 6	Pipe Ring Clamp	5/8 (M16)	6	(150)
MP-MS 3/4	Pipe Clamp Ring	3/8 (M10)	3/4	(20)
MP-MS 1	Pipe Clamp Ring	3/8 (M10)	1	(25)
MP-MS 1 1/4	Pipe Clamp Ring	3/8 (M10)	1 1/4	(32)
MP-MS 1 1/2	Pipe Clamp Ring	3/8 (M10)	1 1/2	(40)
MP-MS 2	Pipe Clamp Ring	3/8 (M10)	2	(50)
MP-MS 54/57	Pipe Clamp Ring	3/8 (M10)	N/A	(54/57)

Company Name:	Hilti AG
Company Address:	Feldkircherstrasse 100, Box 333 , 9494 Schaan , Liechtenstein
Company Website:	http://hilti.com
New/Updated Product Listing:	No
Listing Country:	Liechtenstein
Certification Type:	FM Approved
Class of Work:	1951-Pipe hangers For AS Sys

Pipe Hangers

Pipe hangers are used to support a sprinkler piping system from the building structure. Two or more listed components may be required to form a complete hanger assembly. The specific components required depend upon the type of building construction and the pipe size.

Loop Hangers

A type of pipe hanger which provides vertical adjustment that utilizes a formed strap looped around the pipe.

Hilti AG, Loop Hangers

Product Specification

Model No	Description	Hanger Rod Size, in (mm)	Nominal Pipe Size	
			in	(mm)
MP-SP	Loop Hanger	3/8 (M10)	3/4 through 4	(20 through 100)
MP-SP	Loop Hanger	3/8 (M10)	5 1/4 through 6	(133 through 150)
MP-SP	Loop Hanger	3/8 (M10)	N/A	(219)
MP-SPN	Loop Hanger	3/8 (M10)	3/4	(20)
MP-SPN	Loop Hanger	3/8 (M10)	1	(25)
MP-SPN	Loop Hanger	3/8 (M10)	1 1/4	(32)
MP-SPN	Loop Hanger	3/8 (M10)	1 1/2	(40)
MP-SPN	Loop Hanger	3/8 (M10)	2	(50)
MP-SPN	Loop Hanger	3/8 (M10)	2 1/2	(65)
MP-SPN	Loop Hanger	3/8 (M10)	3	(80)
MP-SPN	Loop Hanger	3/8 (M10)	4	(100)
MP-SPN	Loop Hanger	3/8 (M12)	5 1/4	(133)
MP-SPN	Loop Hanger	3/8 (M12)	5	(125)
MP-SPN	Loop Hanger	3/8 (M12)	6 1/4	(159)
MP-SPN	Loop Hanger	3/8 (M12)	6	(150)
MP-SPN	Loop Hanger	5/8 (M16)	8 1/2	(219.1)
LH	Loop Hanger	3/8 (M10)	3/4 through 4	(20 through 100)
LH	Loop Hanger	1/2 (M12)	6, 8	(150, 200)

Company Name:	Hilti AG
Company Address:	Feldkircherstrasse 100, Box 333 , 9494 Schaan , Liechtenstein
Company Website:	http://hilti.com
New/Updated Product Listing:	No
Listing Country:	Liechtenstein
Certification Type:	FM Approved
Class of Work:	1951-Pipe hangers For AS Sys

Pipe Hangers

Pipe hangers are used to support a sprinkler piping system from the building structure. Two or more listed components may be required to form a complete hanger assembly. The specific components required depend upon the type of building construction and the pipe size.

C-Type Clamps

A type of clamp that is used to provide a load carrying connection to the flange of a building structural element, usually by use of a jaw and setscrew combination. It also provides for the attachment of a threaded rod.

Hilti AG, C-Type Clamps

Product Specification

Model No	Description	Hanger Rod Size, mm (in)	Nominal Pipe Size		Remarks
			mm	(in)	
MAB-M10	Beam Clamp	10	20 through 100	(3/4 through 4)	
MAB-10	Beam Clamp	10	20 through 100	(3/4 through 4)	
MAB-M12	Beam Clamp	12	20 through 200	(3/4 through 8)	
MAB-13	Beam Clamp	12	20 through 200	(3/4 through 8)	
MAB-M16	Beam Clamp	16	20 through 300	(3/4 through 12)	
MAB-17	Beam Clamp	16	20 through 300	(3/4 through 12)	a
MQT-G M10	Swivel Beam Clamp	10	20 through 100	(3/4 through 4)	

Remarks:

a.) Approved for use with the set screw on the load side

Company Name:	Hilti AG
Company Address:	Feldkircherstrasse 100, Box 333 , 9494 Schaan , Liechtenstein
Company Website:	http://hilti.com
New/Updated Product Listing:	No
Listing Country:	Liechtenstein
Certification Type:	FM Approved
Class of Work:	1951-Pipe hangers For AS Sys

Pipe Hangers

Pipe hangers are used to support a sprinkler piping system from the building structure. Two or more listed components may be required to form a complete hanger assembly. The specific components required depend upon the type of building construction and the pipe size.

Clevis Hangers

A type of pipe hanger which provides vertical adjustment, consisting of a clevis type top bolted to a formed steel bottom strap.

Hilti AG, Clevis Hangers

Product Specification

Model No	Description	Hanger Rod Size, in (mm)	Nominal Pipe Size	
			in	(mm)
SLC-EG	Clevis Hanger	3/8 (M10)	2, 2 1/2	(50, 65)
SLC-EG	Clevis Hanger	1/2 (M12)	3	(80)
SLC-EG	Clevis Hanger	5/8 (M16)	4, 5	(100, 125)
SLC-EG	Clevis Hanger	3/4 (M20)	6, 8	(150, 200)
SDC EG	Clevis Hanger	1/2 (M12)	2 1/2, 3	(65, 80)
SDC EG	Clevis Hanger	5/8 (M16)	4, 5	(100, 125)
SDC EG	Clevis Hanger	3/4 (M20)	6, 8	(150, 200)

Company Name:	Hilti AG
Company Address:	Feldkircherstrasse 100, Box 333 , 9494 Schaan , Liechtenstein
Company Website:	http://hilti.com
New/Updated Product Listing:	No
Listing Country:	Liechtenstein
Certification Type:	FM Approved
Class of Work:	1951-Pipe hangers For AS Sys

Pipe Hangers

Pipe hangers are used to support a sprinkler piping system from the building structure. Two or more listed components may be required to form a complete hanger assembly. The specific components required depend upon the type of building construction and the pipe size.

Miscellaneous Hangers

Miscellaneous pipe hangers; including side beam attachments, rod couplings, eye sockets, flange extensions, trapeze hangers, etc.

Hilti AG, Miscellaneous Hangers

Product Specification

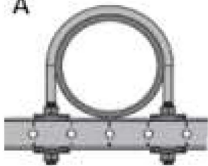
Model No	Description	Hanger Rod Size, mm (in)	Nominal Pipe Size		Remarks
			mm	(in)	
MF-SKD-M10	Toggle	10	20 through 40	(3/4 through 1 1/2)	
MF-TSH-M10	Suspension Hanger	10	20 through 50	(3/4 through 2)	
2288426	U Bolt	NA		1 1/2	a, b, c
2288427	U Bolt	NA		2	a, b, c
2288428	U Bolt	NA		2 1/2	a, b, c
2288429	U Bolt	NA		3	a, b, c
2288430	U Bolt	NA		3 1/2	a, b, c
2288431	U Bolt	NA		4	a, b, c
2288432	U Bolt	NA		5	a, b, c
2288433	U Bolt	NA		6	a, b, c
2288434	U Bolt	NA		8	a, b, c
2288435	U Bolt	NA		10	a, b, c
2288436	U Bolt	NA		12	a, b, c
2288404	U Bolt	NA		3/4	a, b, c
2288405	U Bolt	NA		1	a, b, c
2288406	U Bolt	NA		1 1/4	a, b, c
2288407	U Bolt	NA		1 1/2	a, b, c
2288408	U Bolt	NA		2	a, b, c
2288409	U Bolt	NA		2 1/2	a, b, c
2288410	U Bolt	NA		3	a, b, c
2288411	U Bolt	NA		3 1/2	a, b, c
2288412	U Bolt	NA	108		a, b, c
2288413	U Bolt	NA		4	a, b, c
2288414	U Bolt	NA	133		a, b, c
2288415	U Bolt	NA		5	a, b, c
2288416	U Bolt	NA	159		a, b
2288417	U Bolt	NA		6	a, b
2288418	U Bolt	NA		8	a, b
2288419	U Bolt	NA		10	a, b
2288420	U Bolt	NA		12	a, b

2288381	U Bolt	NA		3/4	a, b, c
2288382	U Bolt	NA		1	a, b, c
2288383	U Bolt	NA		1 1/4	a, b, c
2288384	U Bolt	NA		1 1/2	a, b, c
2288385	U Bolt	NA		2	a, b, c
2288386	U Bolt	NA		2 1/2	a, b, c
2288387	U Bolt	NA		3	a, b, c
2288388	U Bolt	NA		3 1/2	a, b, c
2288389	U Bolt	NA	108		a, b, c
2288390	U Bolt	NA		4	a, b, c
2288391	U Bolt	NA	133		a, b, c
2288392	U Bolt	NA		5	a, b, c
2288393	U Bolt	NA	159		a, b
2288394	U Bolt	NA		6	a, b
2288395	U Bolt	NA		8	a, b
2288396	U Bolt	NA		10	a, b
2288397	U Bolt	NA		12	a, b
2288316	Pipe Strap	NA		3/4	a, b
2288317	Pipe Strap	NA		1	a, b
2288318	Pipe Strap	NA		1 1/4	a, b
2288319	Pipe Strap	NA		1 1/2	a, b
2288370	Pipe Strap	NA		2	a, b

Remarks:

- a. FM Approved when mounted in Position A (structure supports gravity load, not U bolt or strap)
- b. FM Approved when mounted in Position B (U bolt or strap supports gravity load).
- c. FM Approved when mounted in Position C.

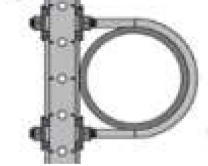
A



B



C



Company Name:	Hilti AG
Company Address:	Feldkircherstrasse 100, Box 333 , 9494 Schaan , Liechtenstein
Company Website:	http://hilti.com
New/Updated Product Listing:	No
Listing Country:	Liechtenstein
Certification Type:	FM Approved
Class of Work:	1951-Pipe hangers For AS Sys

消 防 處
牌 照 及 審 批 總 區
香 港 九 龍 尖 沙 咀 東 部 康 莊 道 1 號
消 防 總 部 大 廈 5 樓



FIRE SERVICES DEPARTMENT
LICENSING AND CERTIFICATION COMMAND
5/F, Fire Services Headquarters Building,
No.1 Hong Chong Road, Tsim Sha Tsui East,
Kowloon, Hong Kong.

本處檔號 **OUR REF.:** (9) in FP 208/0003 Pt.5
來函檔號 **YOUR REF.:** 205/FP/DY/23
電子郵件 **E-mail :** lcpolic2@hkfsd.gov.hk
圖文傳真 **FAX :** (852) 2367 3631
電 話 **TEL NO.:** (852) 2733 7592

15 January 2024

Hilti (Hong Kong) Limited
701-704 & 708B, 7/F,
Tower A, Manulife Financial Centre,
223 Wai Yip Street, Kwun Tong,
Kowloon, Hong Kong

Dear Mr. Dennis YEUNG,

Re: Clarification on pipe supports (i.e. loop hanger) for Sprinkler System

I refer to my interim reply of 5.1.2024 on the captioned subject.

According to FSD Circular Letter No. 3/2020, if a piece of Fire Service Installations and Equipment (FSI) (except portable equipment) is being listed by one of the Product Certification Bodies (PCBs), e.g. Underwriter Laboratories Inc. (UL) and FM Approvals (FM), it is deemed to be accepted by this Department subject to such FSI, its application and installation being in conformity with all relevant local requirements.

Besides, the pipe supports for sprinkler system would be accepted by this Department if the requirements outlined in Clause 17.2 of LPC Rules for Automatic Sprinkler Installation 2015 incorporating BS EN 12845 are complied with.

Should you need any amplifications, please contact our Fire Protection Facilities Group at 3961 5217.

Yours faithfully,


(CHEUNG Ka-ho)
for Director of Fire Services

Attn. : To whom it may concern

Date : 29 January 2024
Ref. : 016/FP/DY/24

Subject : Country of Origin – Hilti LH Sprinkler Loop Hanger

Dear Sir / Madam,

Enclosed please find the information of Hilti LH Sprinkler Loop Hanger.

Brand Name : Hilti

Model Name : Hilti LH Sprinkler Loop Hanger

Manufacturer : Hilti Corporation

Address of Manufacturer : FL-9494, Principality of Liechtenstein.

Supplier : Hilti (Hong Kong) Ltd

Address of Supplier : 701-704, 7/F, Tower A, Manulife Financial Centre,
223 Wai Yip Street, Kwun Tong, Kowloon, Hong Kong

Country of Origin : China

Should you have further questions, please do not hesitate to contact our Technical Representatives, Customer Service Hotline at 8228-8118, or email us at hksales@hilti.com.

Yours faithfully,



Dennis Yeung
Head of Product Leadership Strategy, F&P

