



Hilti LH Sprinkler Loop Hanger

Submission Folder

Product Information	2
Technical Data	4
Letters	
Certificate of compliance	5
FSD letter	8
Country of Origin	9
Job reference	10



Recycling one ton of paper saves 17 trees and 7000 gallons of water.
Please consider your environmental responsibility before using the hard copy version!

5.0 MODULAR SYSTEM HANGERS

LOOP HANGERS

Product Features



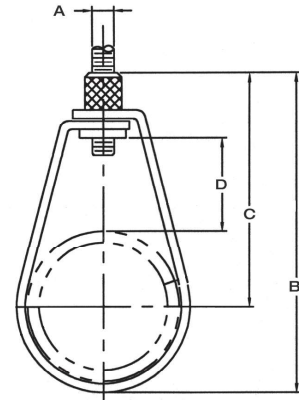
Material Specifications

Material and finish	Pre-galvanized carbon steel with zinc-electroplated insert nut
Approvals	Factory Mutual (FM) 1/2 to 8
Listings	Underwriters Laboratories (UL-cUL)
Conforms with	<ul style="list-style-type: none"> Federal Specification WW-H-171 (Type 10) Manufacturers Standardization Society ANSI/MSS-SP-58 (Type 10)
Installation	Install in accordance with ANSI/MSS-SP-58



Ordering Information / Technical Data

Description	Weight/ Box (lb)	Pipe Size	Rod Size A	B	C	D	Qty	Item No.	Max Allowable Load (lb) ¹
LH 1/2"	7	1/2"	3/8"	2-3/4"	2-5/16"	1-1/16"	100	257353	300
LH 3/4"	7	3/4"	3/8"	3-1/16"	2-1/2"	1-1-16"	100	257354	300
LH 1"	8.25	1"	3/8"	3-5/16"	2-5/8"	1-1/16"	100	337820	300
LH 1-1/4"	10	1-1/4"	3/8"	3-9/16"	2-11/16"	1"	100	257356	300
LH 1-1/2"	10	1-1/2"	3/8"	3-13/16"	2-13/16"	1"	100	257357	300
LH 2"	10	2"	3/8"	4-1/4"	3-1/16"	1"	100	257358	300
LH 2-1/2"	30	2-1/2"	3/8"	5-9/16"	3-15/16"	1-5/8"	100	257359	525
LH 3"	16	3"	3/8"	6-9/16"	4-5/8"	2"	50	257360	525
LH 4"	16.5	4"	3/8"	7-9/16"	5-3/16"	2-1/16"	50	257362	650
LH 6	5	6"	1/2"	11-5/16"	7-7/8"	3-7/16"	20	257364	1000
LH 8"	22.5	8"	1/2"	12-7/8"	8-7/16"	3"	15	257365	1000



¹ Based on a safety factor of 3,5

PIPE CLAMP PORTFOLIO OVERVIEW



Pipe clamp types		MP-L-I	MP-HI MP-H	MP-PI MP-P	MP-U-I MP-U <small>NEW</small>	MP-U-G <small>NEW</small>	MP-MI MP-M	MP-MIS	MP-MXI MP-MX	MRP-RPC	MI-CF MI-CF LS	MIP-H/-M/-T <small>NEW</small>	MRP-KF MP-KF 170	MV-PI MV-PIF MV-P	LH	MP-SPN	MP-MS	MFP-PC	MFP-KF	MP-PI HDG	MP-MI-F MP-M-F	MP-MXI-F MP-MX-F	MFP-L-F/MFP-F	MP-SRNI MP-SRN	MPN-R	MP-MRI MP-MR	MP-MRXI					
Characteristics		Zinc plated																		Hot-dip galvanized				Stainless steel								
Material		Zinc plated																		Hot-dip galvanized				Stainless steel								
Load class/Product type		Light duty				Medium duty				Heavy duty				Refrigeration				Ventilation		Sprinkler		Fixed Points		Heavy duty				Light duty		Heavy duty		
Applications	Fresh water distribution pipes	•	•	•	•	•	•	•	•											•	•	•		•	•	•	•					
	Heating pipes	•	•	•	•	•	•	•	•											•	•	•	•	•	•	•	•					
	Gas distribution pipes	•	•	•	•	•	•	•	•												•	•	•		•	•	•	•				
	Waste water pipes	•	•	•	•	•	•	•	•												•	•	•		•		•	•				
	Light industrial piping								•	•											•	•	•		•	•	•	•				
	Chilled water/Air conditioning pipes										•	•	•	•							•											
	Refrigeration pipes (sub-zero temperatures)										•	•	•	•							•											
	Ventilation pipes															•																
	Sprinkler pipes																•	•	•													
	Properties	Inlay material	EPDM	EPDM	EPDM	TPE	Flocked EPDM - gliding surface	EPDM	Silicone	EPDM	Closed-cell polyurethane foam	Closed-cell polyurethane foam	CFC-free PUR/PIR	CFC-free PUR/PIR	EPDM	EPDM				Thermal insulation	EPDM	EPDM	EPDM	EPDM	EPDM	EPDM	EPDM	EPDM				
Threaded rod/tube size		M8 or M8/M10	M8/M10	M8/M10 or M12	M8 or M8/M10 or M8/M10/Q16 or M8/M10/1/2"	M8 or M8/M10 or M8/M10/1/2"	M10/M12 or M16 or 1/2" or 3/4"	M10/M12 or M16	M10/M12 or M16	M10/M12 or M16 or 1/2" or 1"	M8/M10 or M16	M8/M10 or M10/M12 or M16	M8/M10 or M16	M8/M10 or M16 or M16/1/2" or M16/1/4"	M16 or M20 or M24	M8/M10 or w/o head	M8/M10 or 1/2" or 3/4"	M8/M10 or w/o head	M10 or M12	M8 or M10 or M12 or M16	M8/M10 or M10 or M12	M20	M20	M8/M10	M10	M10/M12 or M16	M20	M8 or M10	M8 or M8/M10 or M10/M12	M10 or M12 or M16 or 1/2" or 3/4"	M16	
Quick closure		•	•	•	•	•					•	•	•	•																		
Clamping range		9-170 mm	8-172 mm	11-326 mm 15-170 mm	9-170 mm 13-176 mm	16-56 mm 16-160 mm 50-160 mm	15-250 mm	15-250 mm	60-508 mm	10.2-219.1 mm	15-108 mm 57-273 mm	10-169 mm	10-410 mm	10-221 mm	12.7-219.1 mm	219.7-711.2 mm	80-1250 mm	27-224 mm	26.9-219.1 mm	20-168 mm	21-326 mm	76.1-609 mm	11-219.1 mm	20-90 mm	60-508 mm	21-273 mm	15-65 mm	12-220 mm	15-224 mm	244-508 mm		
Load range		400-1350 N	600-1500 N	750-2500 N 750-1500 N	800-2400 N	800-2400 N	1800-4500 N 2000-5000 N	1800-4500 N	2400-17000 N 4000-19000 N	40-2.850 N	36-1250 N 610-3840 N	40-2600 N	40-11400 N	40-5000 N	40-150 N 5260 N	6500-17000 N	700-1500 N	1250-1500 N	700-1200 N	2000-8000 N	2000-8500 N	2000-5000 N	no vertical load	no vertical load	750-2250 N	1800 N	2400-17000 N 4000-19000 N	no vertical load	1200-1600 N 2000 N	1200-2500 N	3000-5000 N	10000-17000 N
Temperature resistance range		-40°C +110°C	-40°C +110°C	-40°C +110°C	-40°C +110°C	-50°C +110°C	-40°C +110°C	-50°C +200°C	-50°C +120°C	-50°C +120°C	-30°C +105°C	-80°C +140°C	-40°C +105°C	-45°C +105°C	-40°C +110°C	-40°C +110°C				-45°C +105°C	-40°C +110°C	-50°C +120°C	-50°C +120°C		-50°C +120°C		-50°C +120°C		-50°C +120°C			
Sound reduction		18.5 dB (A)	17 dB (A)	16 dB (A)	19.4 dB (A)	22 dB (A)	19 dB (A)	23 dB (A)	16 dB (A)	22.5 dB (A)		>19 dB (A)	>21 dB (A)	>20 dB (A)	16 dB (A)	17 dB (A) ≤ 200 21 dB (A) ≥ 224					16 dB (A)	18 dB (A)	16 dB (A)		15 dB (A)		18 dB (A)		16 dB (A)			
Insulation thickness										19 mm	20-50 mm	13-16 mm	20-25 mm	31-50 mm	30-66 mm	60 mm					30-60 mm											
Thermal conductivity										0.034 W/mK	0.030 W/mK	0.036 W/mK	0.043 W/mK	0.049 W/mK						0.042 W/mK												
Performance		Multi-Line	Product category	••••○	••••○	••••○	••••○	••••○	••••○	••••○	••••○	••••○	••••○	••••○	••••○	••••○	••••○	••••○	••••○	••••○	••••○	••••○	••••○	••••○	••••○	••••○	••••○	••••○	••••○			
	Approvals	Certificates/Approvals/Reports																														

Legende
 • Suitable for application/Yes
 ○ Plenty suitable for application
 - Not relevant/No

Multi-Line classification
 ••••○ Ultimate
 ••••• Premium
 ••••○ Standard

Certificates/Approvals/Reports
 Sound reduction tested
 Building material class B2/E

Fire-tested/certified
 Fire-tested/certified
 European Technical Assessment (ETA)

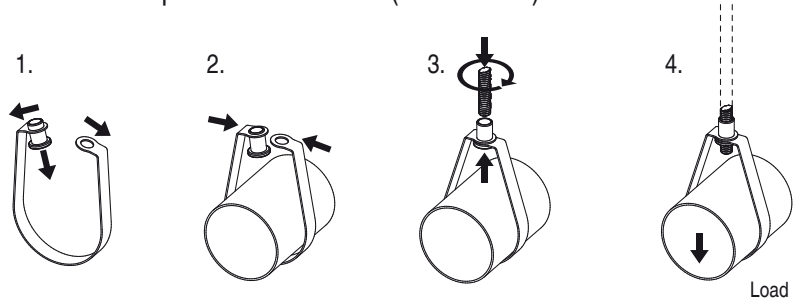
DNV-GL certified
 DNV-GL certified
 Shock certified

VdS
 VdS approved
 FM approved

UL approved
 UL approved
 British Standard

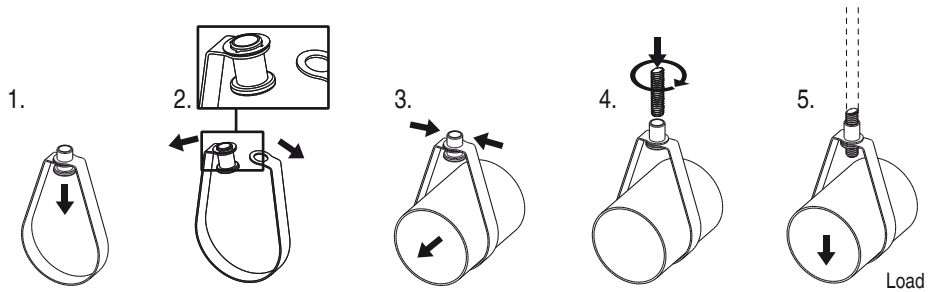
Installation instruction loop hanger

Installation option sizes 1/2" to 2" (nut caulked):



nominal Pipe size	Rod size [RS]		Approval
1/2"	3/8"	M10	UL
3/4"			FM / UL
1"			FM / UL
1-1/4"			FM / UL
1-1/2"			FM / UL
2"			FM / UL
2-1/2"			FM / UL
3"			FM / UL
4"	1/2"	M12	FM / UL
6"			FM / UL
8"			FM / UL

Installation option sizes 2-1/2" to 8" (nut with washer):



Issued to: HILTI AKTIENGESELLSCHAFT
Feldkircherstrass 100
P.O. Box 333
Schaan, 9494 Liechtenstein

**This is to certify that
representative samples of** Hangers, Pipe
Hangers, Pipe Certified for Canada
See addendum below for models

Have been investigated by UL in accordance with the
Standard(s) indicated on this Certificate.

Standard(s) for Safety: CAN/UL 203 – Pipe Hanger Equipment for Fire Protection
Service

Additional Information: See the UL Online Certifications Directory at
www.ul.com/database for additional information

Only those products bearing the UL Certification Mark should be considered as being covered by UL's
Certification and Follow-Up Service.

Look for the UL Certification Mark on the product.

Pipe hangers

Model	Hanger Type	Rod Size, in.	NPS*	Comments
MAB-M10	Universal Beam Clamp	M10	4	—
MAB-11	Universal Beam Clamp	M10	4	—
MAB-M12	Universal Beam Clamp	M12	8	—
MAB-13	Universal Beam Clamp	M12	8	—
MAB-M16	Universal Beam Clamp	M16	12	—
MAB-17	Universal Beam Clamp	M16	12	—
LH	Band Hanger	3/8	1/2, 3/4, 1, 1-1/4, 1-1/2, 2, 2-1/2, 3, 4	—
LH	Band Hanger	1/2	6, 8	—
MP-SP	Band Hanger	10 mm	Up to 4	—
MP-SP	Band Hanger	12 mm	5, 6	—
MP-SP	Band Hanger	16 mm	8	—
SDC-EG	Clevis Hanger	3/8	1/2, 3/4, 1, 1-1/4, 1-1/2, 2	—
SDC-EG	Clevis Hanger	1/2	2-1/2, 3	—
SDC-EG	Clevis Hanger	5/8	4, 5	—

SDC-EG	Clevis Hanger	3/4	6, 8	—
SDC-EG	Clevis Hanger	7/8	10, 12	—
SLC-EG	Clevis Hanger	3/8	2, 2-1/2	—
SLC-EG	Clevis Hanger	1/2	3	—
SLC-EG	Clevis Hanger	5/8	4, 5	—
SLC-EG	Clevis Hanger	3/4	6, 8	—
MP-SPN	Loop Hanger	M10	3/4, 1, 1-1/4, 1-1/2, 2, 2-1/2, 3, 4	—
MP-SPN	Loop Hanger	M12	133mm, 5, 159 mm, 6	—
MP-SPN	Loop Hanger	M16	219.1 mm	—
MP-US	U-Strap	N/A	1/2, 3/4, 1, 1-1/4, 1-1/2, 2, 2-1/2, 3, 3-1/2, 108mm, 4, 133mm, 5, 159mm, 6, 8, 10, 12	Can be installed on the bottom, side, or top (surge restraint) orientations
MP-UB (metric)	U-Bolt	N/A	1/2, 3/4, 1, 1-1/4, 1-1/2, 2, 2-1/2, 3, 3-1/2, 108mm, 4, 133mm, 5, 159mm, 6, 8, 10, 12	Metric threads; Can be installed on the bottom, side, or top (surge restraint) orientations
MP-UB (NPT)	U-Bolt	N/A	1-1/2, 2, 2-1/2, 3, 3-1/2, 4, 5, 6, 8, 10, 12	NPT threads; Can be installed on the bottom, side, or top (surge restraint) orientations
MP-MS	Pipe Clamp	10 mm	1/2, 3/4, 1, 1-1/4, 1-1/2, 2, 2-1/2, 3	—
MP-MS	Pipe Clamp	12 mm	4, 5, 6	—
MF-TSH	Trapezoidal Bracket	10 mm	3/4, 1	—

* NPS = Nominal pipe size

消 防 處
牌 照 及 審 批 總 區
香 港 九 龍 尖 沙 咀 東 部 康 莊 道 1 號
消 防 總 部 大 廈 5 樓



FIRE SERVICES DEPARTMENT
LICENSING AND CERTIFICATION COMMAND
5/F, Fire Services Headquarters Building,
No.1 Hong Chong Road, Tsim Sha Tsui East,
Kowloon, Hong Kong.

本處檔號 **OUR REF.:** (9) in FP 208/0003 Pt.5
來函檔號 **YOUR REF.:** 205/FP/DY/23
電子郵件 **E-mail :** lcpolic2@hkfsd.gov.hk
圖文傳真 **FAX :** (852) 2367 3631
電 話 **TEL NO.:** (852) 2733 7592

15 January 2024

Hilti (Hong Kong) Limited
701-704 & 708B, 7/F,
Tower A, Manulife Financial Centre,
223 Wai Yip Street, Kwun Tong,
Kowloon, Hong Kong

Dear Mr. Dennis YEUNG,

Re: Clarification on pipe supports (i.e. loop hanger) for Sprinkler System

I refer to my interim reply of 5.1.2024 on the captioned subject.

According to FSD Circular Letter No. 3/2020, if a piece of Fire Service Installations and Equipment (FSI) (except portable equipment) is being listed by one of the Product Certification Bodies (PCBs), e.g. Underwriter Laboratories Inc. (UL) and FM Approvals (FM), it is deemed to be accepted by this Department subject to such FSI, its application and installation being in conformity with all relevant local requirements.

Besides, the pipe supports for sprinkler system would be accepted by this Department if the requirements outlined in Clause 17.2 of LPC Rules for Automatic Sprinkler Installation 2015 incorporating BS EN 12845 are complied with.

Should you need any amplifications, please contact our Fire Protection Facilities Group at 3961 5217.

Yours faithfully,


(CHEUNG Ka-ho)
for Director of Fire Services

Attn. : To whom it may concern

Date : 29 January 2024
Ref. : 016/FP/DY/24

Subject : Country of Origin – Hilti LH Sprinkler Loop Hanger

Dear Sir / Madam,

Enclosed please find the information of Hilti LH Sprinkler Loop Hanger.

Brand Name : Hilti

Model Name : Hilti LH Sprinkler Loop Hanger

Manufacturer : Hilti Corporation

Address of Manufacturer : FL-9494, Principality of Liechtenstein.

Supplier : Hilti (Hong Kong) Ltd

Address of Supplier : 701-704, 7/F, Tower A, Manulife Financial Centre,
223 Wai Yip Street, Kwun Tong, Kowloon, Hong Kong

Country of Origin : China

Should you have further questions, please do not hesitate to contact our Technical Representatives, Customer Service Hotline at 8228-8118, or email us at hksales@hilti.com.

Yours faithfully,



Dennis Yeung
Head of Product Leadership Strategy, F&P



Hilti LH Sprinkler loop hanger

Year	Project Name	Customer Name	Project type
2021	SKYCITY ROAD	MING WAI ENGINEERING COMPANY	Commercial
2021	AUSTIN ROAD WEST	CHINA EQUIPMENTENGINEERING	Transport
2021	SKY PLAZA ROAD CENTRAL	SUNRISE ENGINEERING CORPORATE	Transport
2021	SKY CITY ROAD E	CHIN SIU	Commercial
2021	CHUN YUE ROAD	MASSIVE ENGINEERING LIMITED	Commercial
2021	SKY PLAZA ROAD CENTRAL	SUNRISE ENGINEERING CORPORATE	Commercial
2022	HONG KONG SKYCITY A3	SUNRISE ENGINEERING CORPORATE	Transport
2022	SKY CITY ROAD E	CHIN SIU	Commercial
2022	HK INTERNATIONAL AIRPORT T2	WINDMILL ENGINEERING CO LTD	Transport
2022	NOVA DA IIHA VERDE	CPD MC	Infrastructure
2023	HK INTERNATIONAL AIRPORT T2	WINDMILL ENGINEERING CO LTD	Transport
2023	HK INTERNATIONAL AIRPORT T2	SHING YIK FIRE DEVELOPMENT	Transport
2023	SKYCITY A3	CHIN SIU	Transport
2023	SKY PLAZA ROAD CENTRAL	WINDMILL ENGINEERING CO LTD	Commercial
			Transport