



# Hilti HA 8 Eyebolt Anchor

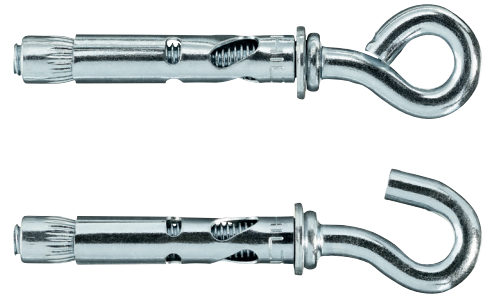
## Submission Folder

Product Information	2
Technical Data	3
Letters	
Country of Origin	7
Job Reference	8



Recycling one ton of paper saves 17 trees and 7000 gallons of water.  
Please consider your environmental responsibility before using the hard copy version!

## Hook and ring anchors HA NG 8



### BASE MATERIALS

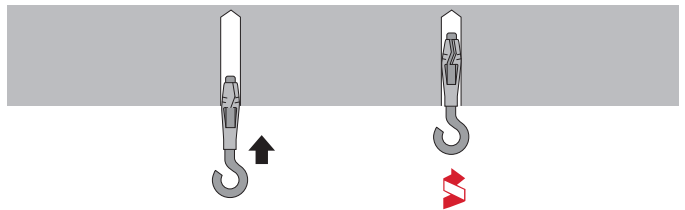
- Concrete (uncracked)

### APPLICATIONS

- Suspensions from concrete ceilings e.g. suspended ceilings etc.

### ADVANTAGES

- Time-saving, easy manual expansion
- Reliable thanks to automatic follow-up expansion



These are abbreviated instructions which may vary according to the application.

### Technical data

Environmental conditions	Indoor, dry conditions
Head configuration	Closed eye bolt, Open eye bolt
Material composition	Steel, zinc-plated (min. 5 µm)
Material, corrosion	Steel, zinc-plated
Type of fastening	Pre-fastening

### Technical data

Recommended load (kN)

Model	Size	HA8 R1	HA8 H1
<b>H2 Concrete at 20 N/mm<sup>2</sup></b>	Tensile Load, N <sub>rec</sub>	0.80	0.80

Remarks:

- 1) All the data applies to no edge distance, spacing and other influences
- 2) Holes must be produced by rotary drilling only

Order Now





Ordering designation	Anchor Size	Anchorage depth	Anchor length	Bolt diameter	Drill bit diameter	Drilling depth	Sales pack quantity	Item number
HA NG 8X45 H1	8 mm	35 mm	76 mm	5.4 mm	8 mm	55 mm	100 pc	2230167
HA NG 8X45 R1	8 mm	35 mm	76 mm	5.4 mm	8 mm	55 mm	100 pc	2230166



Please visit Hilti website for the latest item numbers and related products



# HA 8 NG Light duty metal anchors

## Hook and ring anchor

Anchor version		Benefits
	HA 8 NG R1	<ul style="list-style-type: none"><li>- Well proven</li><li>- Easy-setting</li><li>- Follow-up expansion</li><li>- Hook and ring head available</li></ul>
	HA 8 NG H1	

Base material	Load conditions
 <p>Concrete (non-cracked)</p>	 <p>Static/ quasi-static</p>

Installation conditions
 <p>Hammer drilled holes</p>

### Basic loading data (for a single anchor)

**All data in this section applies to:**

- Correct setting (See setting instruction)
- No edge distance and spacing influence
- Values are only valid for tensile loading
- Concrete C20/25 to C50/60

Concrete		Non-cracked
Tensile $N_{rec}$	[kN]	0,8

### Materials

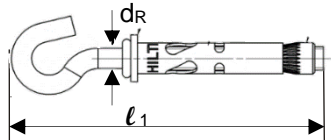
Anchor size		HA 8 NG bolt
Nominal tensile strength	$f_{uk}$ [N/mm <sup>2</sup> ]	520
Yield strength	$f_{yk}$ [N/mm <sup>2</sup> ]	450

### Material quality

Part	Material
Expansion sleeve	Carbon steel, galvanized to min. 5 $\mu$ m
Bolt	Carbon steel, galvanized to min. 5 $\mu$ m

### Anchor dimensions

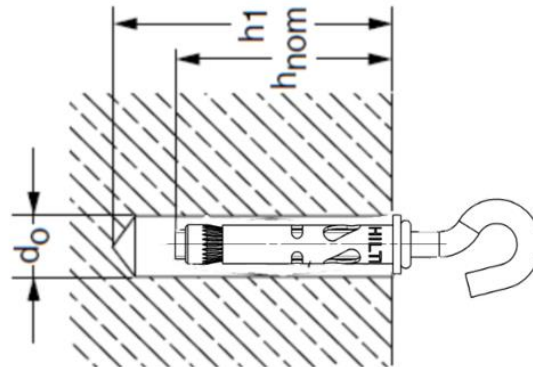
Anchor size		HA 8 NG
Bolt diameter	$d_R$ [mm]	5.4
Length of the anchor	$l_1$ [mm]	76



## Setting information

### Setting details

Anchor size		HA 8 NG
Nominal diameter of drill bit	$d_o$ [mm]	8
Cutting diameter of drill bit	$d_{cut} \leq$ [mm]	8,45
Depth of drill hole	$h_1 \geq$ [mm]	55
Effective anchorage depth	$h_{ef}$ [mm]	35

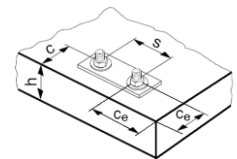


### Installation equipment

Anchor size	HA 8 NG
Rotary hammer	TE2 – TE16
Other tools	Hammer, blow out pump

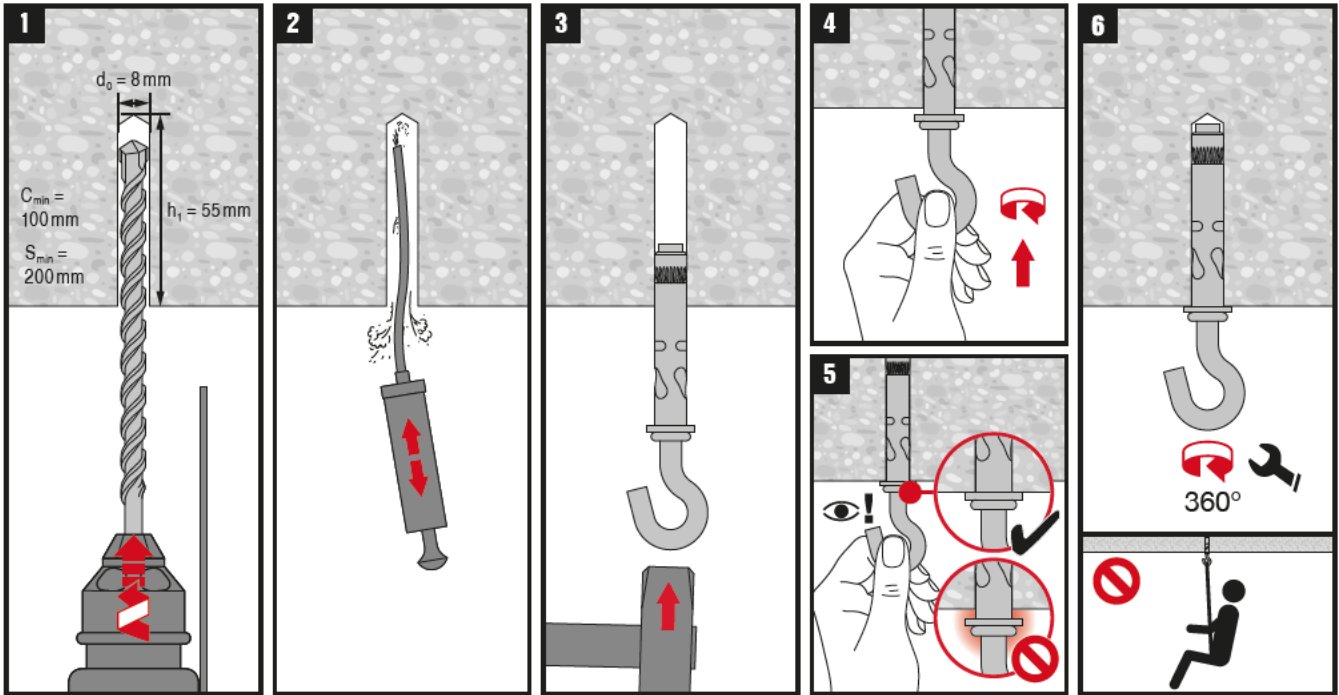
### Setting parameters

Anchor size		HA 8 NG
Minimum base material thickness	$h_{min}$ [mm]	100
Minimum spacing	$s$ [mm]	200
Minimum edge distance	$c$ [mm]	100
Minimum edge distance at the corner	$c_e$ [mm]	150



### Setting instruction

\*For detailed information on installation see instruction for use given with the package of the product.



Attn. : To whom it may concern

Date : 27 September 2023  
Ref. : 147/AM/DY/23

Subject : Country of Origin- Hilti HA 8 Eyebolt Anchor

Dear Sir / Madam,

Enclosed please find the information of HA 8 Eyebolt Anchor.

Brand Name : Hilti

Model Name : Hilti HA 8 Eyebolt Anchor

Manufacturer : Hilti Corporation

Address of Manufacturer : FL-9494, Principality of Liechtenstein.

Manufacturer Contact Person : Dennis Yeung

Supplier : Hilti (Hong Kong) Ltd

Address of Supplier : 701-704, 7/F, Tower A, Manulife Financial Centre,  
223 Wai Yip Street, Kwun Tong, Kowloon, Hong Kong

Supplier Contact Person : Dennis Yeung (+852 9723 4621)

Country of Origin : China

Should you have further questions, please do not hesitate to contact our Technical Representatives, Customer Service Hotline at 8228-8118, or email us at [hksales@hilti.com](mailto:hksales@hilti.com).

Yours faithfully,



Dennis Yeung  
Head of Product Leadership Strategy, F&P

