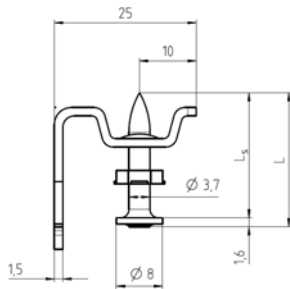


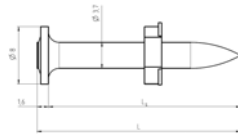
# X-CC CS P8 Loop Hanger System and X-CS P8 Nail

## Product data

### X-CC CS



### X-CS



## Material specification

**X-CC CS:** Zinc coating  $\geq 5 \mu\text{m}$

**X-CS Nail:** Zinc coating  $5 - 20 \mu\text{m}$   
carbon steel shank - HRC 55

Fastening tools **DX 460-F8, DX 351-F8, DX 36, DX E72**

## Applications

### Examples

X-CC CS	X-CS
Wire attachments to concrete	Drywall track to concrete

### Recommended Loads

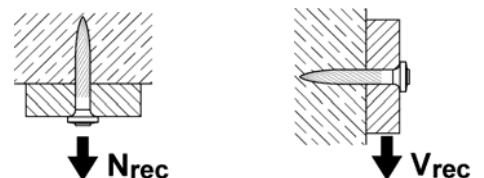
Fastener designation	$N_{rec}$ [kN]	$V_{rec}$ [kN]	$h_{ET}$ [mm]
<b>X-CC CS27 P8</b>	0.2	0.3	22
<b>X-CC CS22 P8</b>	0.15	0.2	18

**X-CC CS**

**X-CS P8 Nail**

 Loads depending on embedment depth  $h_{ET}$ :

$$N_{rec} = V_{rec} = \begin{array}{l} 400 \text{ N for } h_{ET} \geq 27 \text{ mm} \\ 300 \text{ N for } h_{ET} \geq 22 \text{ mm} \\ 200 \text{ N for } h_{ET} \geq 18 \text{ mm} \\ 100 \text{ N for } h_{ET} \geq 14 \text{ mm} \end{array}$$

**X-CS P8 Nail**


Condition:

- Minimum 5 fastenings per fastened unit
- All visible failures must be replaced
- Predominantly static loading

### Application requirements

**Thickness of base material concrete:  $h_{min} = 80 \text{ mm}$** 
**Spacing & edge distances:  $s_{min.} = c_{min.} \geq 70 \text{ mm}$** 

### Corrosion information

These zinc coated fasteners are not suitable for long-term service outdoors or in otherwise corrosive environments.

### Fastener selection

Hanger designation	Item-no.	Nail shank length $L_s$ [mm]	Nail shank diameter [mm]
X-CC CS22 P8	2006454	22	3.7
X-CC CS27 P8	2005065	27	3.7

Nail designation	Item-no.	Shank length Ls [mm]	Shank diameter [mm]	Key application
X-CS 22 P8	436061	22	3.7	Thin metal sheet to concrete
X-CS 27 P8	436062	27	3.7	
X-CS 37 P8	436063	37	3.7	
X-CS 47 P8	436064	47	3.7	Wood to concrete
X-CS 52 P8	436065	52	3.7	
X-CS 62 P8	2006452	62	3.7	
X-CS 72 P8	2006453	72	3.7	

**Cartridge recommendation**

**6.8/11M yellow cartridge** for green concrete, normal weight concrete and sand-lime masonry  
**6.8/11M red cartridge** for prefabricated concrete

**Fastening quality assurance**

**1**

DX 351-CT	X-FG8 ME 351	6.8/11M
DX 351 F8	X-FG8S-351	
DX 460 F8	X-460-F8	6.3/10M
DX 36	36/F3 / 36/S13	
DX 35	21/F3-1 / 21/S1	

DX 351-CT / DX 351 F8  
DX 460 F8 / DX 36 / DX 35

**2**

**3** -2+

**4**

**5** >80 mm / >3 inch

**6** -1+      -3+

**6.1** 2x

**7** >10 kg / >22 lbs

**8** ≥5 x X-CC